



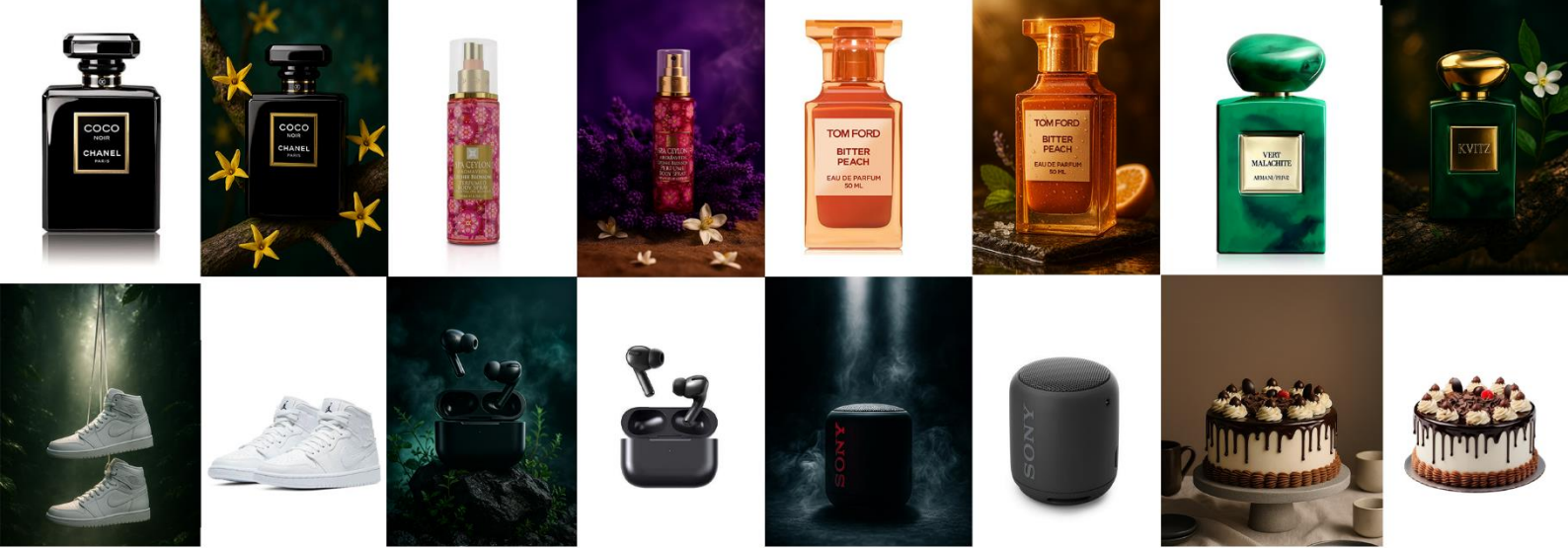
PIXELS BY WORDS

AI MAGIC PROMPT BOOK

KVITZ

KVITZ PIXELS BY WORDS

This book on AI image creation lets you use creative AI to create
stunning images.



KVITZ

What is KvitZ ?

KvitZ is a graphic design company in Sri Lanka. Our sole purpose is not just to do graphic design. We use new technologies to increase productivity and do new things. We also have a large number of other businesses.

What is KvitZedu ?

Our main goal is to create AI-powered photos for you through our new project, KvitZedu. Our main goal with this project is to help small businesses learn how to use AI technology to showcase their products in a very creative way.

Special thanks should go mainly to them

KvitZ would like to thank our partners Pasindu Shanuka and Sithija Ashan for their utmost support in making this project a success.

මේ මූලික පියවර හය අනුගමනය කළ යුතුයි.

BEST AI IMAGE GENERATOR PROMPT

=



Subject + Details + Background + Style + Lighting + Camera

01).Subject (මූලික දේ / කොට / වස්තුව)

මූලිකම කියන්න ඕනේ කවුරු / මොනවද දැක්විය යුතුද.

Ex- "A Sri Lankan young man" / "A luxury perfume bottle" / "A futuristic robot"

02).Details (විස්තර / විශේෂ ලක්ෂණ)

වයස, ඇඳුම, වර්ණ, හැඩය, හැසිරීම.

Ex- "wearing a black leather jacket, short hair, confident look"

03).Background / Environment (පසුබිම)

Indoor / outdoor / beach / forest / gym / futuristic city.

Ex- "standing in a neon-lit futuristic city street at night"

04).Style (ශිල්පය / ආකාරය)

hyperrealistic, cinematic, cartoon, anime, 3D, oil painting, digital art, photography.

Ex- "hyperrealistic cinematic style"

06).Lighting (ආලෝකය)

dramatic lighting, soft light, golden hour, neon glow.

Ex- "hyperrealistic cinematic style"

07).Camera / Composition (කැමරා කාවයේ හැසිරවීම)

close-up, portrait, wide-angle, aerial view, full body, over-the-shoulder.

Ex- "close-up portrait, DSLR photo, ultra-detailed, 8k resolution"

Ai Images generate Prompt Example

Lighting (ආලෝකය)

The lighting is cinematic and high-end, with soft sun rays or natural shadows enhancing surface textures.

Camera / Composition (කැමරා කාවයේ හැසිරවීම)

Shot in 8K resolution, ultra-sharp, high contrast, photorealistic, with professional studio aesthetics.- camera setting f2.8 lens 50mm



Subject (මූලික දේ / කෙනා / වස්තුව)

Ultra-realistic, professional advertising poster of a premium cosmetic product

Details (විස්තර / විශේෂ ලක්ෂණ)

A single elegant bottle or tube (glass, matte, or glossy finish) is in sharp focus, standing on a textured natural surface such as polished stone, driftwood, or calm water.

Background / Environment (පසුබිම)

Surrounding elements include small, tastefully arranged decorative items like mint leaves, citrus slices, lavender sprigs, sea salt crystals, or dried flowers - adding a fresh, organic touch.

Style (ශිල්පය / ආකාරය)

Hyper-detailed rendering of the product texture, label design, reflections, and light flares. The background is minimalistic and blurred with soft bokeh or a smooth neutra gradient, ensuring focus remains on the product



ChatGPT

Ultra-realistic, professional advertising poster of a premium cosmetic product. A single elegant bottle or tube (glass, matte, or glossy finish) is in sharp focus, standing on a textured natural surface such as polished stone, driftwood, or calm water. Surrounding elements include small, tastefully arranged decorative items like mint leaves, citrus slices, lavender sprigs, sea salt crystals, or dried flowers - adding a fresh, organic touch. The lighting is cinematic and high-end, with soft sun rays or natural shadows enhancing surface textures. The product features detailed water droplets for a fresh, dewy effect. Hyper-detailed rendering of the product texture, label design, reflections, and light flares. The background is minimalistic and blurred with soft bokeh or a smooth neutra gradient, ensuring focus remains on the product. Composition is balanced and designed for luxury branding. Shot in 8K resolution, ultra-sharp, high contrast, photorealistic, with professional studio aesthetics. camera setting f2.8 lens 50mm

Ratio කියන්නේ මොකදද ?

Ratio කියන්නේ ඡායාරූපය දිගට සහ පළලට ඇති අනුපාතය

ඡායාරූපයක නිර්මාණය කරද්දී එය නිර්මාණය කරන සමාජ ජාලා මාධ්‍යයට ගැලපෙන විදිහට මෙහි දිග හා පළල අතර අනුපාතය ලබාදීම මෙයින් සිදුකෙරේ (ඔබට නිර්මාණය කර ගැනීමට අවශ්‍ය විදිහට දිග හා පළල ලබා දීමට මෙය භාවිතා කරයි)

Vertical Line

A high-fashion jewelry poster in elegant grayscale and muted tones, featuring a woman in a soft, dreamy pose with her face blurred or de-emphasized for focus on the jewelry. The jewelry product (uploaded separately) is displayed both worn on the wrist and floating in the foreground with realistic shadows and sparkles. The background is a minimal studio setup with soft lighting, luxurious contrast, and a clean fabric or matte surface. Maintain a premium, editorial aesthetic with shallow depth of field and polished lighting. No text, no logos. Highlight the jewelry as the only color element - shiny, golden, and detailed. **SHOT IN VERTICAL 4:5 RATIO**

Horizontal Line

A dramatic product photograph of a Sony portable Bluetooth speaker standing upright, surrounded by swirling smoke and illuminated by cinematic beams of light from above. The background is dark and moody, with the smoke adding depth and atmosphere. The Sony logo on the speaker is clearly visible, glowing subtly with red highlights. The overall scene has a premium, high-contrast, mysterious feel, similar to luxury watch advertisements.

HORIZONTAL 4:5 RATIO

Compare ratios:

- 1:1 → square (1080×1080)
- 16:9 → widescreen (1920×1080, YouTube)
- 9:16 → full vertical (TikTok/Reels, 1080×1920)
- 4:5 → Instagram vertical post (1080×1350)

1.1

16.9

9.16

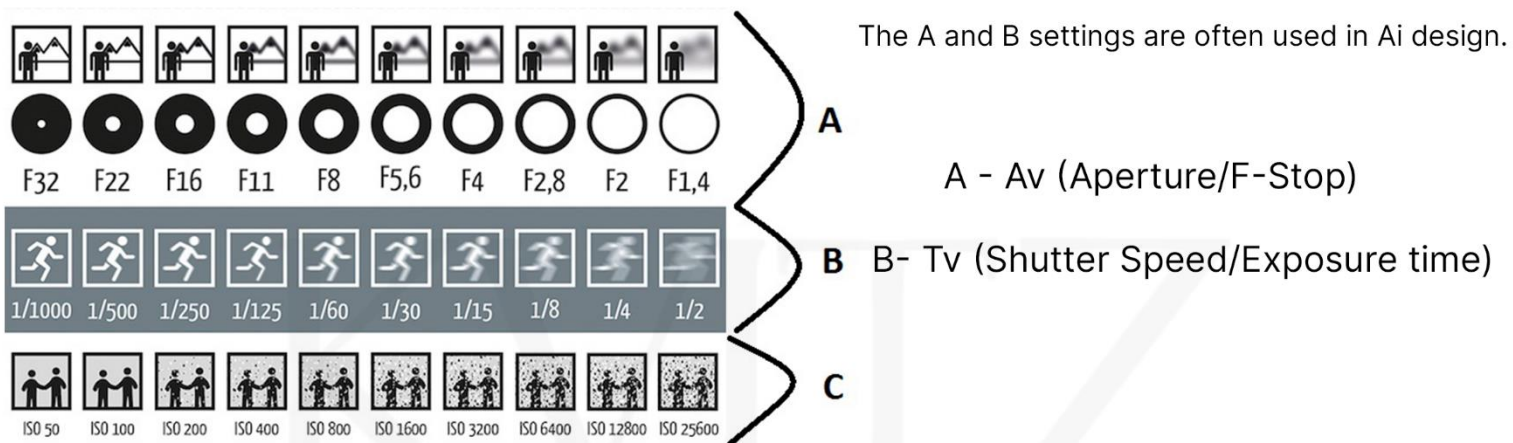
4.5

Ai Images නිර්මාණය කිරීමේදී කැමරා කාච වල බලපෑම ඇති වෙන්නේ කෙසේද ?

ඔබ නිර්මාණය කරන Images අනුව එය තේතීමට අවශ්‍ය ස්වරූපය ගැන එතෙතමත් නැත්නම් Image Main Object තේතීමට අවශ්‍ය කෝණය පිළිබඳව ඔබට අනිවාර්යෙන් අදහසක් ඇත . මෙම කැමරා ලෙන්ස් Settings දැන ගැනීමෙන් ඔබට අවශ්‍ය අකාරයට Images තේතන ලෙස නිර්මාණය කර ගැනීමේ හැකියාව ඇත .

(You definitely have an idea of the look you want the image to look like, or rather the angle of view required by the basic unit. By knowing these camera lens settings, you can create the image you want to look like.)

And here is a break down into the effects and changes of Av, Tv, and ISO settings



Ex- Ultra-realistic, professional advertising poster of a premium cosmetic product. A single elegant bottle or tube (glass, matte, or glossy finish) is in sharp focus, standing on a textured natural surface such as polished stone, driftwood, or calm water. Surrounding elements include small, tastefully arranged decorative items like mint leaves, citrus slices, lavender sprigs, sea salt crystals, or dried flowers - adding a fresh, organic touch. The lighting is cinematic and high-end, with soft sun rays or natural shadows enhancing surface textures. The product features detailed water droplets for a fresh, dewy effect. Hyper-detailed rendering of the product texture, label design, reflections, and light flares. The background is minimalistic



CAMERA SETTING F2.8 LENS 50MM



HOW TO USE CAMERA SETTINGS IN AN AI MODEL

Separate this product by hand Add it to a very dramatic purple background Add matching lavender flowers Place the product on a bed of lavender flowers. Show it as if Neroli flowers are scattered on the ground . Add some sand to flow, it should be a cinematic atmospheric smoke, worm Soft light, Cinematic Colour , camera setting f2.8 lens 50mm



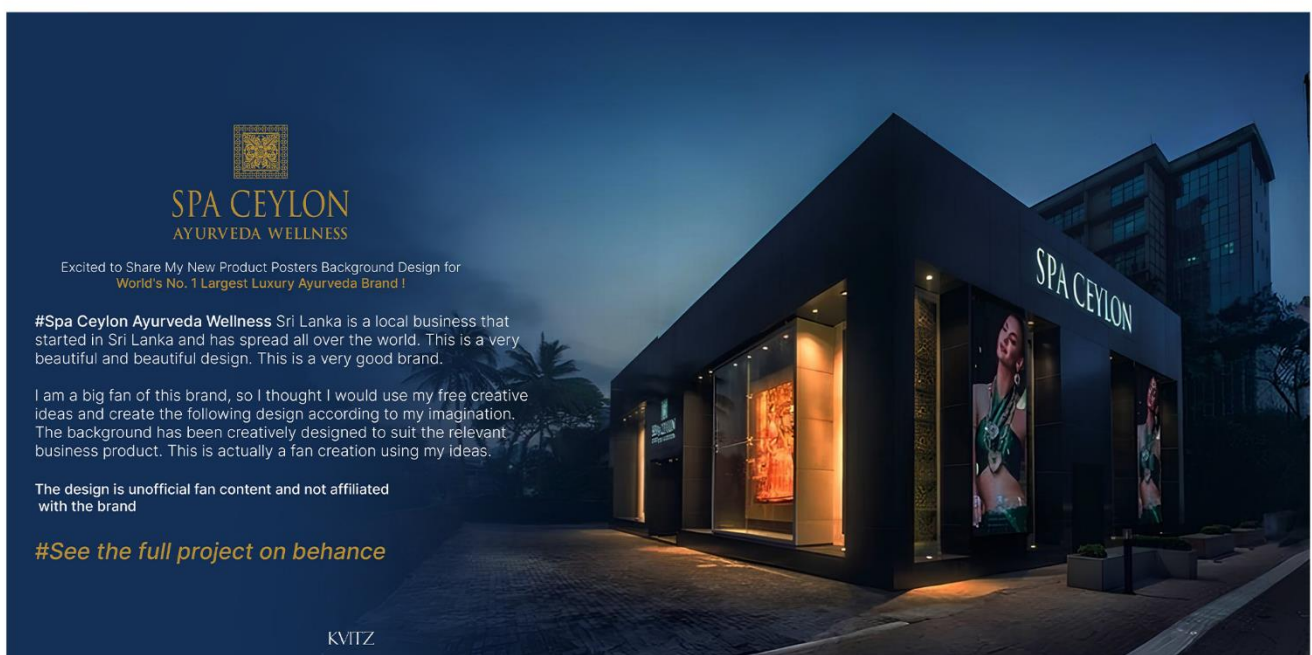
camera setting f2.8 lens 50mm

A camera setting of f/2.8 on a 50mm lens is a wide aperture that allows a lot of light, creating a shallow depth of field for a blurry background, which is ideal for portraits. In brighter conditions, a higher f-stop like f/8 or f/11 is better to increase the depth of field for landscapes. When using f/2.8, you should also adjust your shutter speed and ISO to achieve a proper exposure, possibly faster to freeze motion or lower ISO for better quality in good light.

(50mm) කාචයක (f/2.8) කැමරා සැකසුම යනු විශාල ආලෝකයක් ලබා දෙන පුළුල් විවරයකි, එය නොපැහැදිලි පසුබිමක් සඳහා නොගැඹුරු ක්ෂේත්‍ර ගැඹුරක් නිර්මාණය කරයි. එය ඡායාරූප සඳහා වඩාත් සුදුසුය. දීප්තිමත් තත්වයන් යටතේ, භූ දර්ශන සඳහා ක්ෂේත්‍ර ගැඹුර වැඩි කිරීමට (f/8) හෝ (f/11) වැනි ඉහළ (f-stop) වඩා නොදය. f/2.8 භාවිතා කරන විට, නිසි නිරාවරණයක් ලබා ගැනීම සඳහා ඔබ ඔබේ අර්ධ වේගය සහ (ISO) සකස් කළ යුතුය. සමහර විට වලිනය කැටි කිරීමට වේගවත් විය හැකිය හෝ නොද ආලෝකයේ වඩා නොද ගුණාත්මකභාවය සඳහා ISO අඩු කළ හැකිය.



All images shown below were created by Kvitz using a camera setting of f2.8 lens 50mm.





All images shown below were created by Kvitz using a camera setting of f2.8 lens 50mm.

Excited to Share My New Product Posters Background Design for World's No. 1 Largest Luxury Ayurveda Brand !

#SpaCeylonAyurveda Wellness Sri Lanka is a local business that started in Sri Lanka and has spread all over the world. This is a very beautiful and beautiful design. This is a very good brand.

I am a big fan of this brand, so I thought I would use my free creative ideas and create the following design according to my imagination. The background has been creatively designed to suit the relevant business product. This is actually a fan creation using my ideas.

#The design is unofficial fan content and not affiliated with the brand

This is just to show you. This is a very valuable brand in Sri Lanka and the whole world. We as Sri Lankans are really proud of this brand.



Ai Images resources - <https://www.facebook.com/share/p/17HmTUSV9m/>

Ai Images Prompt එක කොතොමද වැඩිදියුණු කරගන්න ?

පියවර අංක 01



ChatGpt Ai Tool එක Open කරගන්න

පියවර අංක 02

ඔබට තීරණය කර ගැනීමට අවශ්‍ය වයාරූපයට අදාළ prompt එක ලියාගන්න

පියවර අංක 03

Prompt එක කොතොමද වැඩිදියුණු කරගන්න

Click "Gpts"

Search -FLUX Prompt Pro

Click "Gpts"

FLUX Prompt Pro

Craft ultra-detailed English prompts for FLUX.1 and other AI image generation models. Perfect for photorealism, character design, cinematic scenes, and more.

Show me 5 creative portrait ideas in a realistic style.

Generate 5 creative prompts for realistic...

Design 5 lifelike characters with detailed facial...

Access free tools for AI image, video, and music...

Ask anything

FLUX Prompt Pro

By @FutureEvolab

Craft ultra-detailed English prompts for FLUX.1 and other AI image generation models. Perfect for photorealism, character design, cinematic scenes, and more.

4.4 (1K+)

Productivity

200K+ Conversations

Conversation Starters

Show me 5 creative portrait ideas in a realistic style.

Generate 5 lifelike characters with detailed facial features and em...

Access free tools for AI image, video, and music generation.

Capabilities

Web Search

Code Interpreter & Data Analysis

Ratings

Start Chat

The prompt you provide will be entered here and then improved and provided.



ChatGPT



ChatGPT

The textured tree branch is beautifully placed. Bright, star-shaped yellow flowers with delicate petals surround the bottle, arranged naturally around the branch. The background is softly blurred with rich teal and dark green tones, bringing the warm golden-yellow flower shapes into focus. Dramatic lighting highlights the reflective glass, crisp label details and vibrant flowers, creating a luxurious, masculine and modern atmosphere. Shot in 8K resolution, ultra-sharp, high contrast, photorealistic, with professional studio aesthetics.



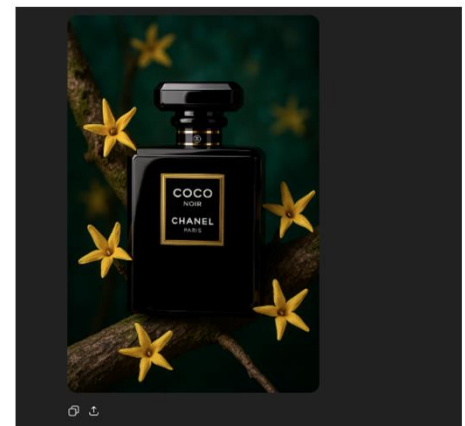
The textured tree branch is beautifully placed. Bright, star-shaped yellow flowers with delicate petals surround the bottle, arranged naturally around the branch. The background is softly blurred with rich teal and dark green tones, bringing the warm golden-yellow flower shapes into focus. Dramatic lighting highlights the reflective glass, crisp label details and vibrant flowers, creating a luxurious, masculine and modern atmosphere. Shot in 8K resolution, ultra-sharp, high contrast, photorealistic, with professional studio aesthetics.

#Things to pay attention to :-

This shows you how to incorporate your product into a creative background without changing anything, leaving the details of your product the same.



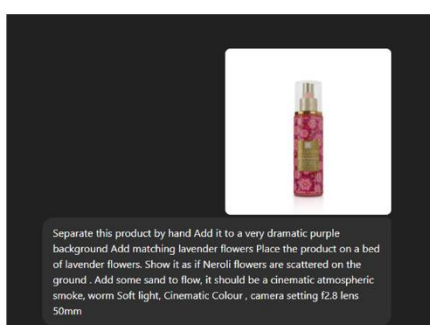
ChatGPT





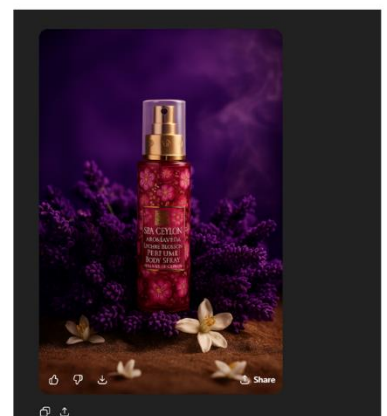
ChatGPT

Separate this product by hand Add it to a very dramatic purple background Add matching lavender flowers Place the product on a bed of lavender flowers. Show it as if Neroli flowers are scattered on the ground . Add some sand to flow, it should be a cinematic atmospheric smoke, worm Soft light, Cinematic Colour , camera setting f2.8 lens 50mm



#Things to pay attention to :-

You can learn from my prompts about how to use camera lenses in product photography, and how to match them to the product.



ChatGPT



ChatGPT

Ultra-realistic, professional advertising poster of a premium cosmetic product. A single elegant bottle or tube (glass, matte, or glossy finish) is in sharp focus, standing on a textured natural surface such as polished stone, driftwood, or calm water. Surrounding elements include small, tastefully arranged decorative items like mint leaves, citrus slices, lavender sprigs, sea salt crystals, or dried flowers - adding a fresh, organic touch. The lighting is cinematic and high-end, with soft sun rays or natural shadows enhancing surface textures. The product features detailed water droplets for a fresh, dewy effect. Hyper-detailed rendering of the product texture, label design, reflections, and light flares. The background is minimalistic and blurred with soft bokeh or a smooth neutra gradient, ensuring focus remains on the product. Composition is balanced and designed for luxury branding. Shot in 8K resolution, ultra-sharp, high contrast, photorealistic, with professional studio aesthetics.

#Things to pay attention to :-

The details given for this design and the things that should be present in the photo created here are well explained. Carefully review today's tips for the realism of the material used to create the glass model.



Ultra-realistic, professional advertising poster of a premium cosmetic product. A single elegant bottle or tube (glass, matte, or glossy finish) is in sharp focus, standing on a textured natural surface such as polished stone, driftwood, or calm water. Surrounding elements include small, tastefully arranged decorative items like mint leaves, citrus slices, lavender sprigs, sea salt crystals, or dried flowers - adding a fresh, organic touch. The lighting is cinematic and high-end, with soft sun rays or natural shadows enhancing surface textures. The product features detailed water droplets for a fresh, dewy effect. Hyper-detailed rendering of the product texture, label design, reflections, and light flares. The background is minimalistic and blurred with soft bokeh or a smooth neutra gradient, ensuring focus remains on the product. Composition is balanced and designed for luxury branding. Shot in 8K resolution, ultra-sharp, high contrast, photorealistic, with professional studio aesthetics.



ChatGPT





ChatGPT

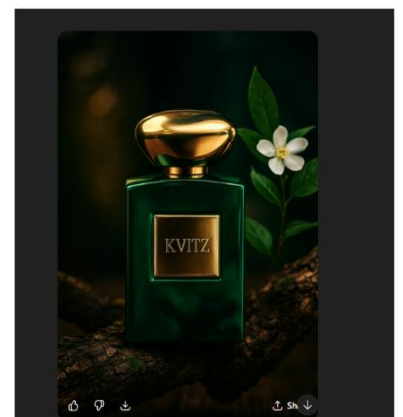
A high-end product photograph of a sleek rectangular perfume bottle labeled "Kvitz" in elegant gold typography. The bottle is made of deep emerald green glass with a polished golden cap, reflecting sophistication and luxury. It rests on a natural, textured tree branch for a bold and earthy feel. Surrounding the bottle are subtle, vivid green leaves and delicate white blossoms, adding freshness and contrast. The background is softly blurred with a bokeh effect in shades of forest green and warm amber highlights. The lighting is dramatic yet balanced, emphasizing the reflective gold details and the richness of the glass, creating an upscale, artistic atmosphere.

#Things to pay attention to :-

Learn how to change the name of a separate brand and its color in this prompt. You can also learn how to change our product background from a colorful background to a cinematic dark environment.



ChatGPT

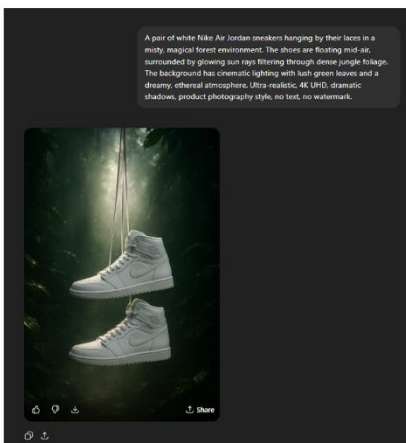




ChatGPT

A pair of white Nike Air Jordan sneakers hanging by their laces in a misty, magical forest environment. The shoes are floating mid-air, surrounded by glowing sun rays filtering through dense jungle foliage. The background has cinematic lighting with lush green leaves and a dreamy, ethereal atmosphere. Ultra-realistic, 4K UHD, dramatic shadows, product photography style, no text, no watermark.

#This photo can be created in either of these two ways, with or without the sample photo..

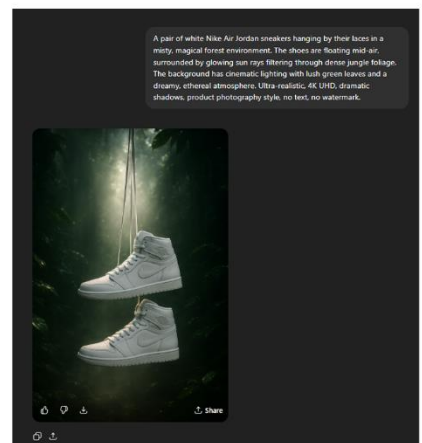


#Things to pay attention to :-

This photo can be created in either of these two ways, with or without the sample photo. You can also learn how to achieve a natural look with the relief in the background from this prompt..



ChatGPT

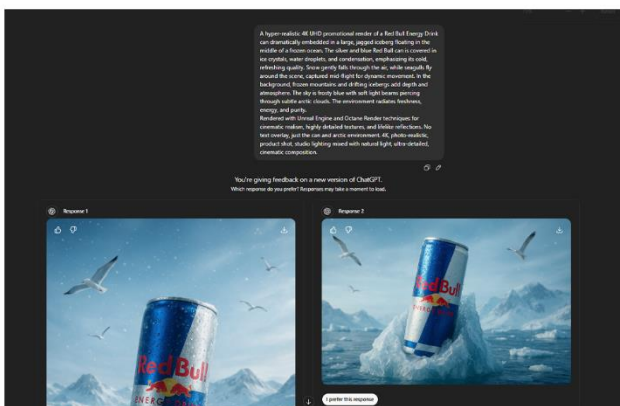




ChatGPT

A hyper-realistic 4K UHD promotional render of a Red Bull Energy Drink can dramatically embedded in a large, jagged iceberg floating in the middle of a frozen ocean. The silver and blue Red Bull can is covered in ice crystals, water droplets, and condensation, emphasizing its cold, refreshing quality. Snow gently falls through the air, while seagulls fly around the scene, captured mid-flight for dynamic movement. In the background, frozen mountains and drifting icebergs add depth and atmosphere. The sky is frosty blue with soft light beams piercing through subtle arctic clouds. The environment radiates freshness, energy, and purity. Rendered with Unreal Engine and Octane Render techniques for cinematic realism, highly detailed textures, and lifelike reflections. No text overlay, just the can and arctic environment. 4K, photo-realistic, product shot, studio lighting mixed with natural light, ultra-detailed, cinematic composition.

#This photo can be created in either of these two ways, with or without the sample photo..



#Things to pay attention to :-

This photo can be created in either of these two ways, with or without the sample photo. You can also learn how to achieve a natural look with the relief in the background from this prompt..



ChatGPT



ChatGPT

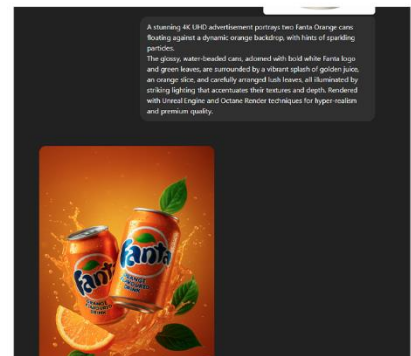
A stunning 4K UHD advertisement portrays two Fanta Orange cans floating against a dynamic orange backdrop, with hints of sparkling particles. The glossy, water-beaded cans, adorned with bold white Fanta logo and green leaves, are surrounded by a vibrant splash of golden juice, an orange slice, and carefully arranged lush leaves, all illuminated by striking lighting that accentuates their textures and depth. Rendered with Unreal Engine and Octane Render techniques for hyper-realism and premium quality.



A stunning 4K UHD advertisement portrays two Fanta Orange cans floating against a dynamic orange backdrop, with hints of sparkling particles. The glossy, water-beaded cans, adorned with bold white Fanta logo and green leaves, are surrounded by a vibrant splash of golden juice, an orange slice, and carefully arranged lush leaves, all illuminated by striking lighting that accentuates their textures and depth. Rendered with Unreal Engine and Octane Render techniques for hyper-realism and premium quality.

#Things to pay attention to :-

Here you can learn how to match the background color to the product color. You can also learn how to handle different poses for your brand in the same pose.



ChatGPT



ChatGPT

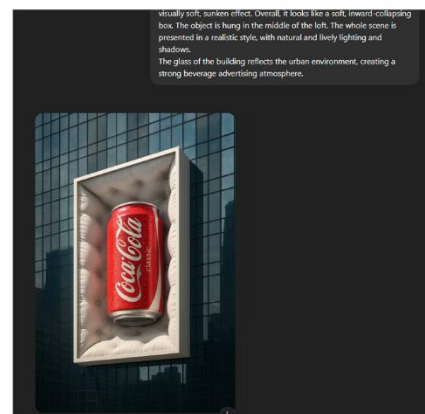
Refer to the single main object in the reference image. Modern glass curtain walls are a surreal 3D advertising installation protruding from the facade of a skyscraper. The billboard is a pure white rectangular box, its inner walls are upholstered with a concave structure of the same color as the object, featuring a sofa-like quilted texture and a visually soft, sunken effect. Overall, it looks like a soft, inward-collapsing box. The object is hung in the middle of the loft. The whole scene is presented in a realistic style, with natural and lively lighting and shadows. The glass of the building reflects the urban environment, creating a strong beverage advertising atmosphere.



Refer to the single main object in the reference image. Modern glass curtain walls are a surreal 3D advertising installation protruding from the facade of a skyscraper. The billboard is a pure white rectangular box, its inner walls are upholstered with a concave structure of the same color as the object, featuring a sofa-like quilted texture and a visually soft, sunken effect. Overall, it looks like a soft, inward-collapsing box. The object is hung in the middle of the loft. The whole scene is presented in a realistic style, with natural and lively lighting and shadows. The glass of the building reflects the urban environment, creating a strong beverage advertising atmosphere.

#Things to pay attention to :-

You can learn how to convert a normal 2D photo into a 3D photo from this photo creation and also when creating AI Ad videos. You can use the photos created from this prompt



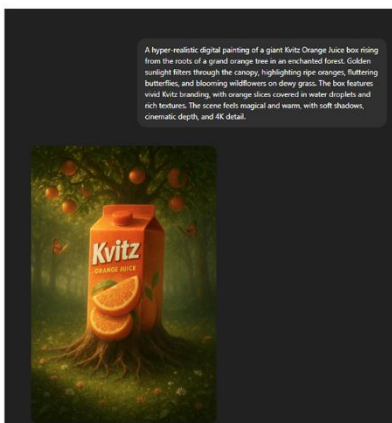
ChatGPT



ChatGPT

A hyper-realistic digital painting of a giant Kvitz Orange Juice box rising from the roots of a grand orange tree in an enchanted forest. Golden sunlight filters through the canopy, highlighting ripe oranges, fluttering butterflies, and blooming wildflowers on dewy grass. The box features vivid Kvitz branding, with orange slices covered in water droplets and rich textures. The scene feels magical and warm, with soft shadows, cinematic depth, and 4K detail.

#This is a design that uses only prompts without any actual photos.



#Things to pay attention to :-

You can see here how to create products from prompts without a product photo. You can also see how to change the brand name here.



ChatGPT





ChatGPT

One ears of grilled corn are positioned centrally on a charcoal grill. The corn is golden yellow with dark grill marks and a light sauce or seasoning visibly coating the kernels. The corn is positioned directly over the flames of the fire, with visible charcoal and embers beneath the grill. The flames are a bright orange and yellow. The background is out of focus, but clearly shows the flames and hot embers of the fire. The perspective is close-up, focusing on the details of the corn and the grill. The lighting is bright and warm, casting strong highlights on the corn and emphasizing the textures and colors. The overall atmosphere is one of cooking outdoors, with a rustic feel. The grill is made of metal, with black grill lines clearly visible. The grill's surface shows blackened areas from the heat and cooking process. The focus is sharp on the corn and its texture, while the fire in the background is slightly blurred.

#This is a design that uses only prompts without any actual photos.

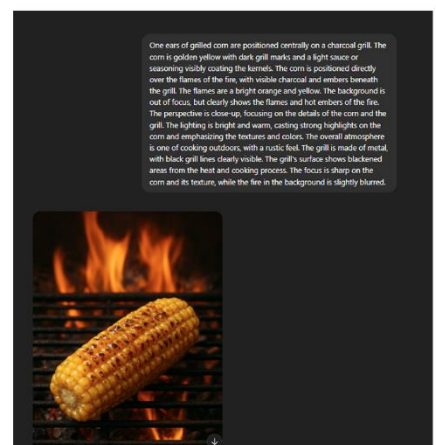


#Things to pay attention to :-

Creating food photos with AI is now happening on a large scale. Here are the details that need to be created in this photo, and the absolute must-haves, so that it is more realistic. You can learn from these prompts.



ChatGPT





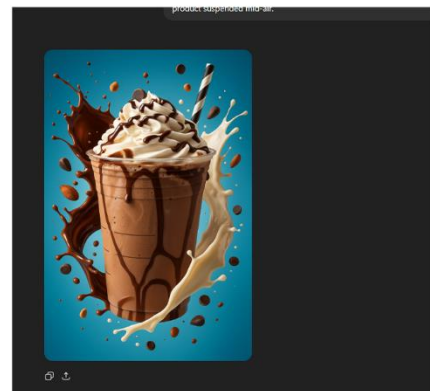
Create a high-resolution, eye-catching commercial image featuring a as the central focus. Surround the product with dynamic and realistic splashes made of [MATCHING MATERIAL: chocolate, milk, juice, etc.], flowing naturally around the shape and size of the product. Add small floating elements relevant to the product (e.g., almonds, fruit slices, candy, cereal bits, etc.). Use a vibrant and contrasting background, such as a gradient blue or warm pastel, to make the product and splash pop. Ensure soft shadows, motion blur, and depth-of-field to enhance realism and give the image a 3D, commercial feel. Maintain a clean, cinematic style with the product suspended mid-air.

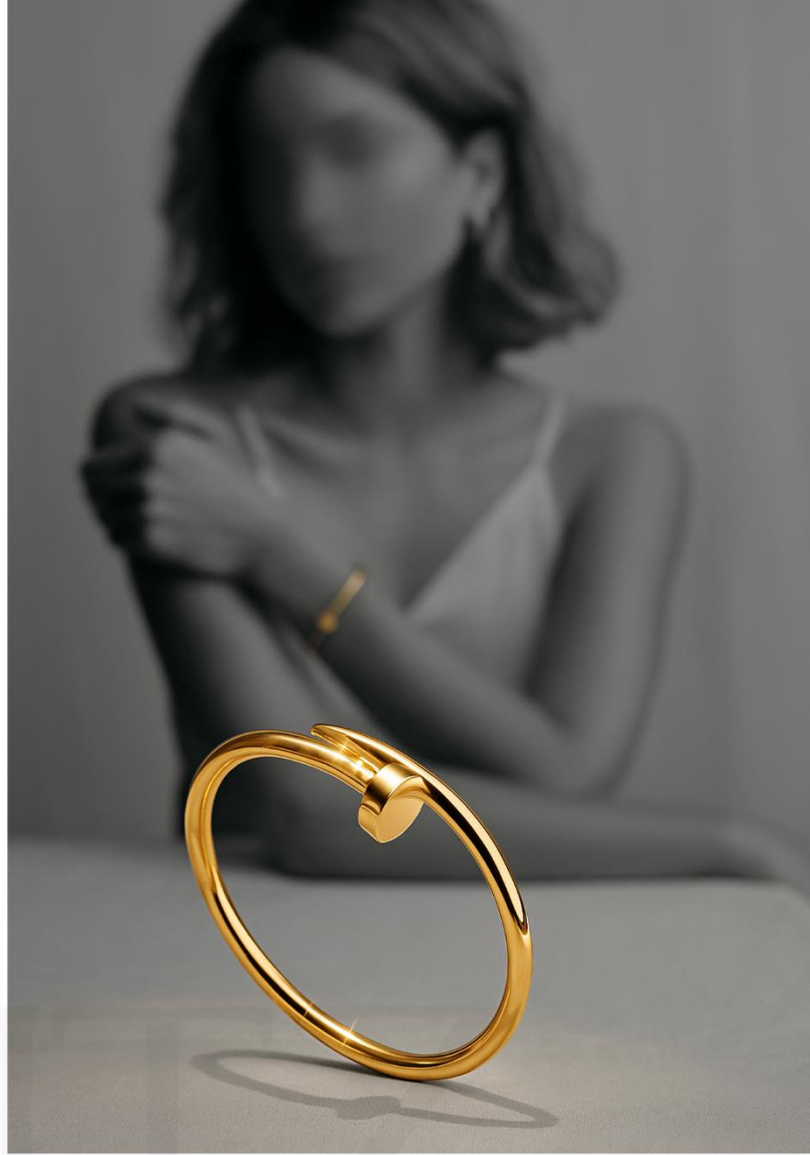


Create a high-resolution, eye-catching commercial image featuring a as the central focus. Surround the product with dynamic and realistic splashes made of [MATCHING MATERIAL: chocolate, milk, juice, etc.], flowing naturally around the shape and size of the product. Add small floating elements relevant to the product (e.g., almonds, fruit slices, candy, cereal bits, etc.). Use a vibrant and contrasting background, such as a gradient blue or warm pastel, to make the product and splash pop. Ensure soft shadows, motion blur, and depth-of-field to enhance realism and give the image a 3D, commercial feel. Maintain a clean, cinematic style with the product suspended mid-air.

#Things to pay attention to :-

You can learn how to convert a normal 2D photo into a 3D photo from this photo creation and also when creating AI Ad videos. You can use the photos created from this prompt





ChatGPT

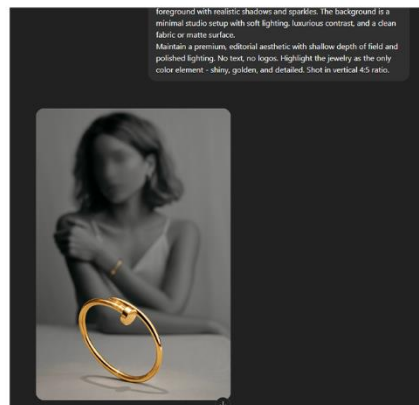
A high-fashion jewelry poster in elegant grayscale and muted tones, featuring a woman in a soft, dreamy pose with her face blurred or de-emphasized for focus on the jewelry. The jewelry product (uploaded separately) is displayed both worn on the wrist and floating in the foreground with realistic shadows and sparkles. The background is a minimal studio setup with soft lighting, luxurious contrast, and a clean fabric or matte surface. Maintain a premium, editorial aesthetic with shallow depth of field and polished lighting. No text, no logos. Highlight the jewelry as the only color element - shiny, golden, and detailed. Shot in vertical 4:5 ratio..



A high-fashion jewelry poster in elegant grayscale and muted tones, featuring a woman in a soft, dreamy pose with her face blurred or de-emphasized for focus on the jewelry. The jewelry product (uploaded separately) is displayed both worn on the wrist and floating in the foreground with realistic shadows and sparkles. The background is a minimal studio setup with soft lighting, luxurious contrast, and a clean fabric or matte surface. Maintain a premium, editorial aesthetic with shallow depth of field and polished lighting. No text, no logos. Highlight the jewelry as the only color element - shiny, golden, and detailed. Shot in vertical 4:5 ratio.

#Things to pay attention to :-

You can learn how to convert a normal 2D photo into a 3D photo from this photo creation and also when creating AI Ad videos. You can use the photos created from this prompt

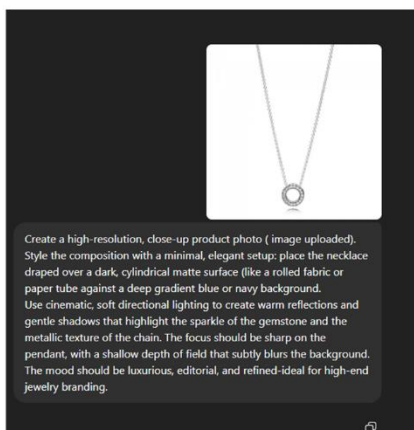


ChatGPT



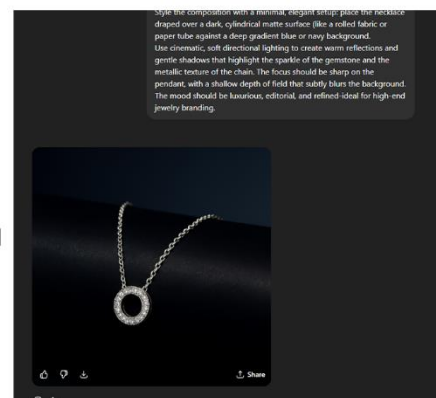
ChatGPT

Create a high-resolution, close-up product photo (image uploaded). Style the composition with a minimal, elegant setup: place the necklace draped over a dark, cylindrical matte surface (like a rolled fabric or paper tube against a deep gradient blue or navy background). Use cinematic, soft directional lighting to create warm reflections and gentle shadows that highlight the sparkle of the gemstone and the metallic texture of the chain. The focus should be sharp on the pendant, with a shallow depth of field that subtly blurs the background. The mood should be luxurious, editorial, and refined-ideal for high-end jewelry branding.



#Things to pay attention to :-

You can learn how to convert a normal 2D photo into a 3D photo from this photo creation and also when creating AI Ad videos. You can use the photos created from this prompt



ChatGPT



ChatGPT

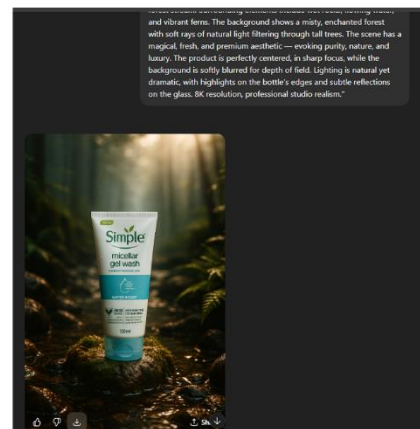
Ultra-realistic cinematic product photography of a Facewash bottle . The bottle is placed on lush green moss in the middle of a shallow forest stream. Surrounding elements include wet rocks, flowing water, and vibrant ferns. The background shows a misty, enchanted forest with soft rays of natural light filtering through tall trees. The scene has a magical, fresh, and premium aesthetic — evoking purity, nature, and luxury. The product is perfectly centered, in sharp focus, while the background is softly blurred for depth of field. Lighting is natural yet dramatic, with highlights on the bottle's edges and subtle reflections on the glass. 8K resolution, professional studio realism.”



Ultra-realistic cinematic product photography of a Facewash bottle . The bottle is placed on lush green moss in the middle of a shallow forest stream. Surrounding elements include wet rocks, flowing water, and vibrant ferns. The background shows a misty, enchanted forest with soft rays of natural light filtering through tall trees. The scene has a magical, fresh, and premium aesthetic — evoking purity, nature, and luxury. The product is perfectly centered, in sharp focus, while the background is softly blurred for depth of field. Lighting is natural yet dramatic, with highlights on the bottle's edges and subtle reflections on the glass. 8K resolution, professional studio realism.”

#Things to pay attention to :-

You can learn from my prompts about how to use camera lenses in product photography, and how to match them to the product.



ChatGPT



ChatGPT

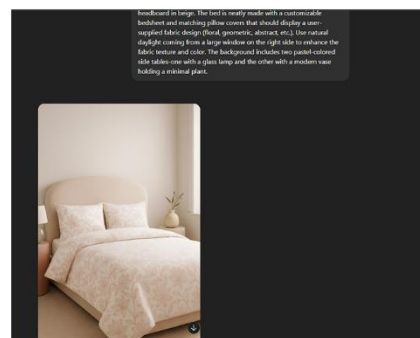
Create a high-resolution, 4:5 vertical image of a modern, minimalistic bedroom with a soft neutral color palette. The room features a queen-sized bed with a curved upholstered headboard in beige. The bed is neatly made with a customizable bedsheet and matching pillow covers that should display a user-supplied fabric design (floral, geometric, abstract, etc.). Use natural daylight coming from a large window on the right side to enhance the fabric texture and color. The background includes two pastel-colored side tables-one with a glass lamp and the other with a modern vase holding a minimal plant.



Create a high-resolution, 4:5 vertical image of a modern, minimalistic bedroom with a soft neutral color palette. The room features a queen-sized bed with a curved upholstered headboard in beige. The bed is neatly made with a customizable bedsheet and matching pillow covers that should display a user-supplied fabric design (floral, geometric, abstract, etc.). Use natural daylight coming from a large window on the right side to enhance the fabric texture and color. The background includes two pastel-colored side tables-one with a glass lamp and the other with a modern vase holding a minimal plant.

#Things to pay attention to :-

You can learn from my prompts about how to use camera lenses in product photography, and how to match them to the product.

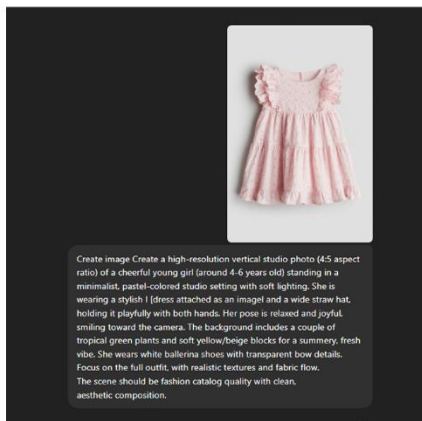


ChatGPT



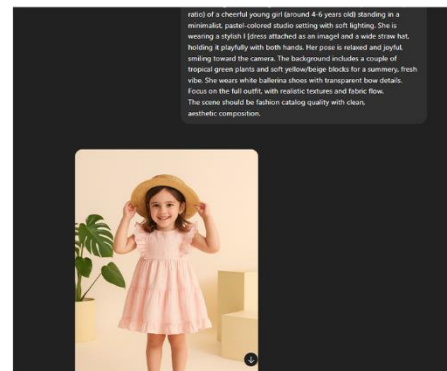
ChatGPT

Create image Create a high-resolution vertical studio photo (4:5 aspect ratio) of a cheerful young girl (around 4-6 years old) standing in a minimalist, pastel-colored studio setting with soft lighting. She is wearing a stylish I [dress attached as an image] and a wide straw hat, holding it playfully with both hands. Her pose is relaxed and joyful, smiling toward the camera. The background includes a couple of tropical green plants and soft yellow/beige blocks for a summery, fresh vibe. She wears white ballerina shoes with transparent bow details. Focus on the full outfit, with realistic textures and fabric flow. The scene should be fashion catalog quality with clean, aesthetic composition.



#Things to pay attention to :-

This is a must-learn for anyone starting a new clothing business. The reason is that a real person can create realistic photos of you wearing your clothes for free. This will save you a lot of money. You can also learn how to create a real person and create realistic photos from these prompts.



ChatGPT



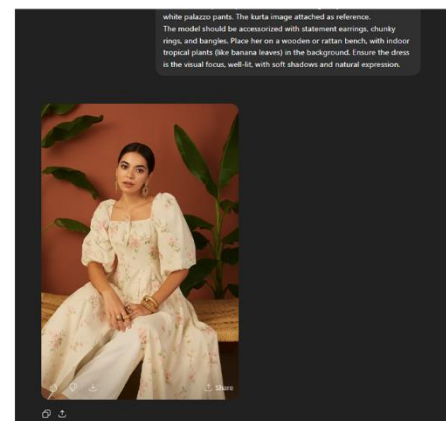
ChatGPT

Create a high-resolution fashion photoshoot image featuring a female model sitting gracefully against a warm-toned studio backdrop (terracotta or peach-pink wall). She is wearing a stylish ethnic kurta with white palazzo pants. The kurta image attached as reference. The model should be accessorized with statement earrings, chunky rings, and bangles. Place her on a wooden or rattan bench, with indoor tropical plants (like banana leaves) in the background. Ensure the dress is the visual focus, well-lit, with soft shadows and natural expression.



#Things to pay attention to :-

This is a must-learn for anyone starting a new clothing business. The reason is that a real person can create realistic photos of you wearing your clothes for free. This will save you a lot of money. You can also learn how to create a real person and create realistic photos from these prompts.



ChatGPT



ChatGPT

delicious [food item] floating in mid-air, cinematic food photography style. Studio lighting with a dark, moody background. Intricate textures and realistic steam or garnish particles in the air. The ingredients (e.g., bread, meat, veggies, cheese, sauces) are layered clearly and suspended in a gravity-defying, appetizing stack. Hyper-detailed, ultra-realistic, with rich shadows and a shallow depth of field. Advertising-style, mouthwatering, visually bold, and dramatic composition

#This is a design that uses only prompts without any actual photos.

A delicious Chicken Burger floating in mid-air, cinematic food photography style. Studio lighting with a dark, moody background. Intricate textures and realistic steam or garnish particles in the air. The ingredients (e.g., bread, meat, veggies, cheese, sauces) are layered clearly and suspended in a gravity-defying, appetizing stack. Hyper-detailed, ultra-realistic, with rich shadows and a shallow depth of field. Advertising-style, mouthwatering, visually bold, and dramatic composition.



#Things to pay attention to :-

You can see how food is created as a gift from this prompt. You can create photos from this prompt in a way that increases the appetite of the person who sees it. You can also see how the food is in a cinematic background that suits the food.



ChatGPT

A delicious Samosa Indian Food floating in mid-air, cinematic food photography style. Studio lighting with a dark, moody background. Intricate textures and realistic steam or garnish particles in the air. The ingredients (e.g., bread, meat, veggies, cheese, sauces) are layered clearly and suspended in a gravity-defying, appetizing stack. Hyper-detailed, ultra-realistic, with rich shadows and a shallow depth of field. Advertising-style, mouthwatering, visually bold, and dramatic composition.





ChatGPT

Use a softly blurred kitchen or café backdrop with dark wood shelves, potted plants, ceramic jars, and vintage containers. Background should have a cozy, artisanal aesthetic with a hint of modern-rustic interior styling. Composition is balanced and designed for luxury branding. Shot in 8K resolution, ultra-sharp, high contrast, photorealistic, with professional studio aesthetics. camera setting f2.8 lens 50mm



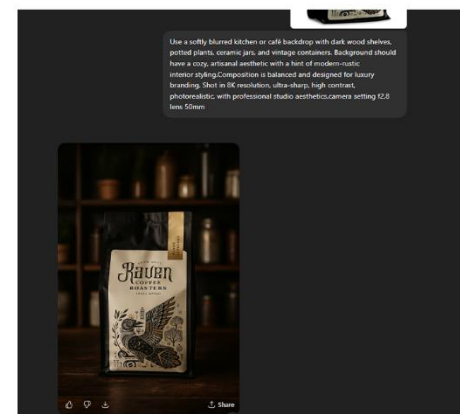
Use a softly blurred kitchen or café backdrop with dark wood shelves, potted plants, ceramic jars, and vintage containers. Background should have a cozy, artisanal aesthetic with a hint of modern-rustic interior styling. Composition is balanced and designed for luxury branding. Shot in 8K resolution, ultra-sharp, high contrast, photorealistic, with professional studio aesthetics. camera setting f2.8 lens 50mm

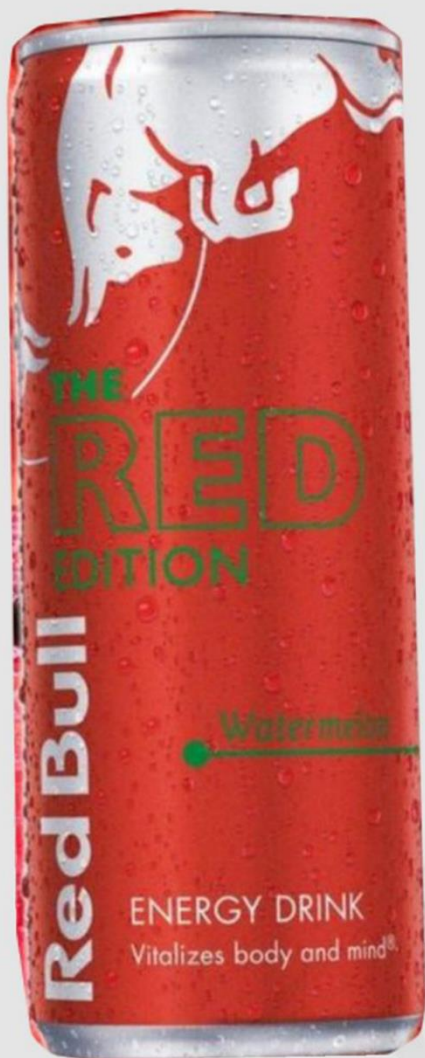
#Things to pay attention to :-

This photo can be created in either of these two ways, with or without the sample photo. You can also learn how to achieve a natural look with the relief in the background from this prompt..



ChatGPT





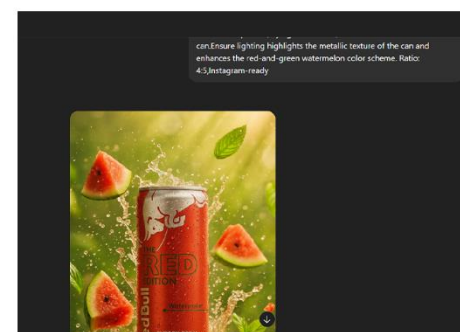
Create a high-quality, ultra-realistic and cinematic promotional image for Red Bull Watermelon Edition. Center the red Red Bull can prominently in the composition, surrounded by splashing water droplets and vibrant floating watermelon slices. Capture the moment as if the can has just been dropped into a burst of juicy freshness. Use a soft green, sunlit background with floating mint leaves and blurred depth-of-field elements for a refreshing summer vibe. Include motion effects like splashes, flying fruit chunks, and condensation on the can. Ensure lighting highlights the metallic texture of the can and enhances the red-and-green watermelon color scheme. Ratio: 4:5, Instagram-ready

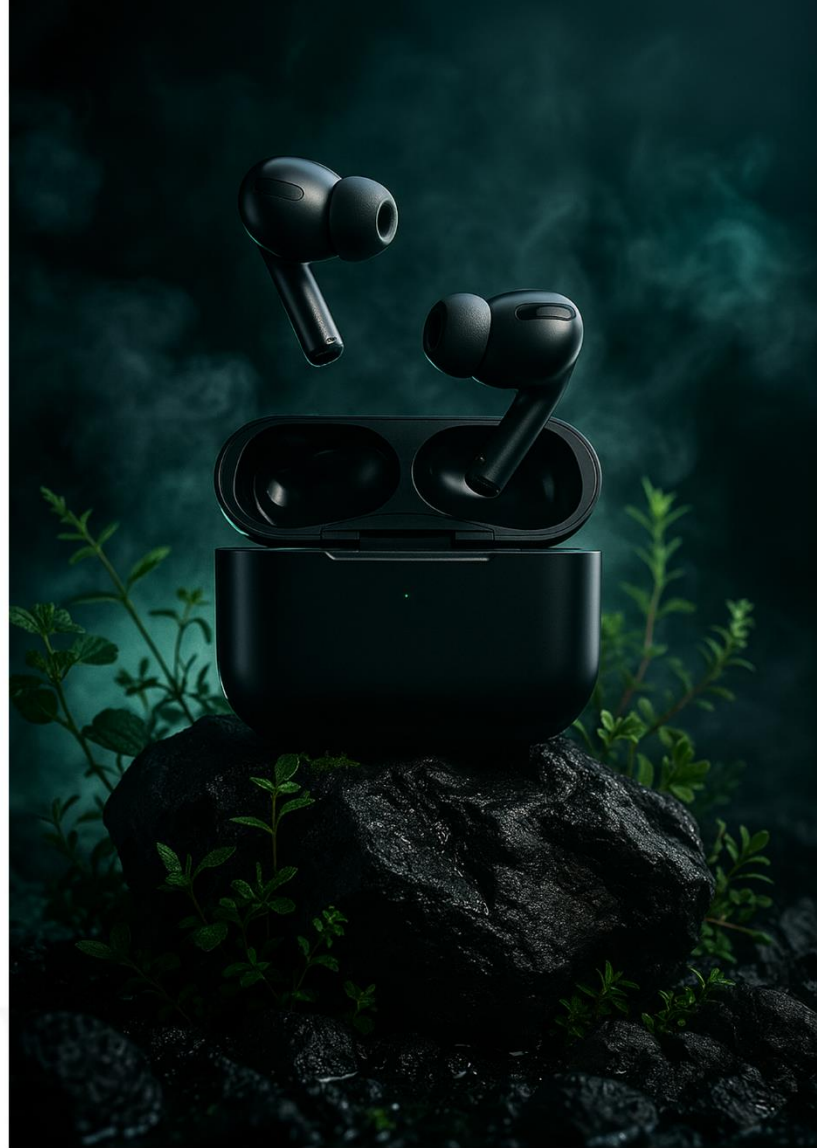


#Things to pay attention to :-

This photo can be created in either of these two ways, with or without the sample photo. You can also learn how to achieve a natural look with the relief in the background from this prompt..

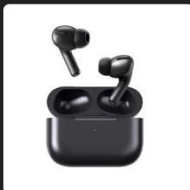
Create a high-quality, ultra-realistic and cinematic promotional image for Red Bull Watermelon Edition. Center the red Red Bull can prominently in the composition, surrounded by splashing water droplets and vibrant floating watermelon slices. Capture the moment as if the can has just been dropped into a burst of juicy freshness. Use a soft green, sunlit background with floating mint leaves and blurred depth-of-field elements for a refreshing summer vibe. Include motion effects like splashes, flying fruit chunks, and condensation on the can. Ensure lighting highlights the metallic texture of the can and enhances the red-and-green watermelon color scheme. Ratio: 4:5, Instagram-ready





ChatGPT

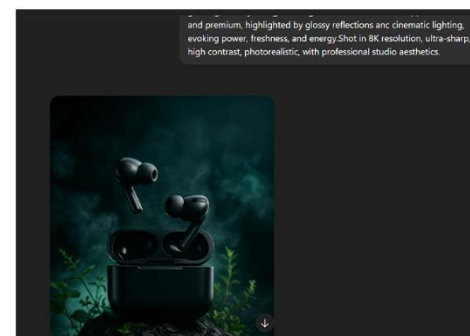
A dramatic product photograph of Apple Air Pods placed on top of rugged black volcanic rocks with water droplets and mist. Surround the rocks with fresh green herbs and subtle plants to add a natural contrast. Enhance the atmosphere with swirling smoke and a glowing, moody background light. The earbuds should appear sleek and premium, highlighted by glossy reflections and cinematic lighting, evoking power, freshness, and energy. Shot in 8K resolution, ultra-sharp, high contrast, photorealistic, with professional studio aesthetics.



A dramatic product photograph of Apple Air Pods placed on top of rugged black volcanic rocks with water droplets and mist. Surround the rocks with fresh green herbs and subtle plants to add a natural contrast. Enhance the atmosphere with swirling smoke and a glowing, moody background light. The earbuds should appear sleek and premium, highlighted by glossy reflections and cinematic lighting, evoking power, freshness, and energy. Shot in 8K resolution, ultra-sharp, high contrast, photorealistic, with professional studio aesthetics.

#Things to pay attention to :-

You can learn from this prompt how to place an item in an empty space in a cinematic background that suits it and how to give that item a cinematic look.



ChatGPT



ChatGPT

A dramatic, cinematic product render of a GoPro Hero 13 action camera, showcased in a rugged environment between rocky cliffs. The camera appears suspended in mid-air, surrounded by floating debris and broken rock fragments, emphasizing strength and adventure. The background has a soft, moody gradient sky with a mix of shadows and light, creating a powerful atmosphere. Ultra-detailed, high-contrast, photorealistic, with cinematic lighting highlighting the camera's textures and logo, Vertical 4:5 ratio

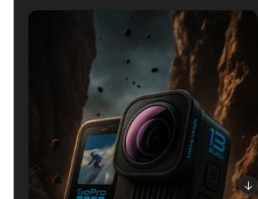


#Things to pay attention to :-

You can learn from this prompt how to place an item in an empty space in a cinematic background that suits it and how to give that item a cinematic look.

A dramatic, cinematic product render of a GoPro Hero 13 action camera, showcased in a rugged environment between rocky cliffs. The camera appears suspended in mid-air, surrounded by floating debris and broken rock fragments, emphasizing strength and adventure. The background has a soft, moody gradient sky with a mix of shadows and light, creating a powerful atmosphere. Ultra-detailed, high-contrast, photorealistic, with cinematic lighting highlighting the camera's textures and logo, Vertical 4:5 ratio

camera, showcased in a rugged environment between rocky cliffs. The camera appears suspended in mid-air, surrounded by floating debris and broken rock fragments, emphasizing strength and adventure. The background has a soft, moody gradient sky with a mix of shadows and light, creating a powerful atmosphere. Ultra-detailed, high-contrast, photorealistic, with cinematic lighting highlighting the camera's textures and logo, Vertical 4:5 ratio



ChatGPT



ChatGPT

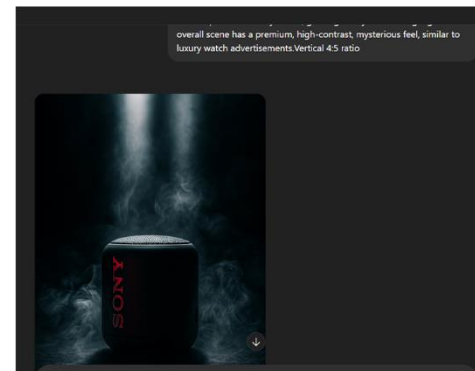
A dramatic product photograph of a Sony portable Bluetooth speaker standing upright, surrounded by swirling smoke and illuminated by cinematic beams of light from above. The background is dark and moody, with the smoke adding depth and atmosphere. The Sony logo on the speaker is clearly visible, glowing subtly with red highlights. The overall scene has a premium, high-contrast, mysterious feel, similar to luxury watch advertisements. Vertical 4:5 ratio



#Things to pay attention to :-

You can learn from this prompt how to place an item in an empty space in a cinematic background that suits it and how to give that item a cinematic look.

A dramatic product photograph of a Sony portable Bluetooth speaker standing upright, surrounded by swirling smoke and illuminated by cinematic beams of light from above. The background is dark and moody, with the smoke adding depth and atmosphere. The Sony logo on the speaker is clearly visible, glowing subtly with red highlights. The overall scene has a premium, high-contrast, mysterious feel, similar to luxury watch advertisements. Vertical 4:5 ratio



ChatGPT



ChatGPT

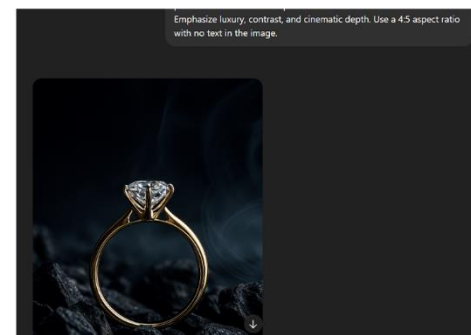
Create a dramatic, high-end jewelry product photo featuring a detailed diamond engagement ring standing upright among rough black stones or charcoal. Use a dark, moody background with soft, ethereal smoke or mist swirling through the scene to add mystery and atmosphere. The lighting should be focused and directional, highlighting the intricate detailing of the ring while casting soft shadows on the surrounding stones. The ring should have a highly polished metal finish and prominent diamond centerpiece. Emphasize luxury, contrast, and cinematic depth. Use a 4:5 aspect ratio with no text in the image.



Create a dramatic, high-end jewelry product photo featuring a detailed diamond engagement ring standing upright among rough black stones or charcoal. Use a dark, moody background with soft, ethereal smoke or mist swirling through the scene to add mystery and atmosphere. The lighting should be focused and directional, highlighting the intricate detailing of the ring while casting soft shadows on the surrounding stones. The ring should have a highly polished metal finish and prominent diamond centerpiece. Emphasize luxury, contrast, and cinematic depth. Use a 4:5 aspect ratio with no text in the image.

#Things to pay attention to :-

You can learn from this prompt how to place an item in an empty space in a cinematic background that suits it and how to give that item a cinematic look.



ChatGPT



ChatGPT

Create a high-quality, vibrant product image in 1080×1350 resolution (instagram post size featuring the Britannia Good Day Choc-ochip Cookies pack as the central focus. Arrange multiple packs in a dynamic, scattered lay-out-some slightly tilted, overlapping each other. Add realistic 3D cookies and flying chocolate chips around the packs to create a sense of motion and fun.

Use a glowing purple and blue gradient background with smooth lighting, shadows, and soft highlights to give the scene energy and depth. Make the product branding clearly visible and sharp. The overall composition should look playful, colorful, and eye-catching, similar in BARA energy to a Chips Ahoy-style ad.

#This photo can be created in either of these two ways, with or without the sample photo..

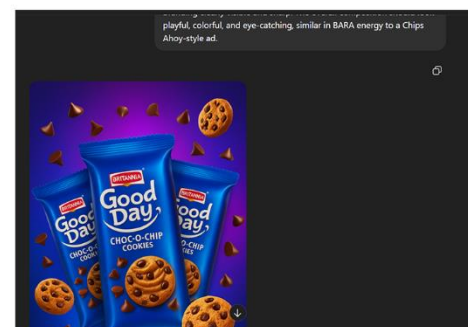
#The sample photo included to get the shape of the cookie packet is shown above.



Create a high-quality, vibrant product image in 1080x1350 resolution (instagram post size featuring the Britannia Good Day Choc-ochip Cookies pack as the central focus. Arrange multiple packs in a dynamic, scattered lay-out-some slightly tilted, overlapping each other. Add realistic 3D cookies and flying chocolate chips around the packs to create a sense of motion and fun. Use a glowing purple and blue gradient background with smooth lighting, shadows, and soft highlights to give the scene energy and depth. Make the product branding clearly visible and sharp. The overall composition should look playful, colorful, and eye-catching, similar in BARA energy to a Chips Ahoy-style ad.

#Things to pay attention to :-

You can use the Hita prompt to take the shape of any existing package you want and make it look similar to it. You can also learn how to get a 3D look for the merchandise from the prompt above.



ChatGPT



ChatGPT

Create a high-end sneaker advertisement featuring a single modern running shoe . The shoe should appear as if floating mid-air with dramatic lighting and shadows to enhance depth. Use a rugged, realistic rocky cave environment as the background, giving an adventurous and extreme terrain feel. Include ynamic lighting that highlights the textures of both the shoe and the cave. Add sharp motion blur on the laces to show movement. Maintain a dark, moody, cinematic tone overall. Vertical 4:5 ratio

#This photo can be created in either of these two ways, with or without the sample photo..



Create a high-end sneaker advertisement featuring a single modern running shoe . The shoe should appear as if floating mid-air with dramatic lighting and shadows to enhance depth. Use a rugged, realistic rocky cave environment as the background, giving an adventurous and extreme terrain feel. Include ynamic lighting that highlights the textures of both the shoe and the cave. Add sharp motion blur on the laces to show movement. Maintain a dark, moody, cinematic tone overall. Vertical 4:5 ratio

#Things to pay attention to :-

You can learn from this prompt how to place an item in an empty space in a cinematic background that suits it and how to give that item a cinematic look

Create a high-end sneaker advertisement featuring a single modern running shoe . The shoe should appear as if floating mid-air with dramatic lighting and shadows to enhance depth. Use a rugged, realistic rocky cave environment as the background, giving an adventurous and extreme terrain feel. Include ynamic lighting that highlights the textures of both the shoe and the cave. Add sharp motion blur on the laces to show movement. Maintain a dark, moody, cinematic tone overall. Vertical 4:5 ratio



ChatGPT



ChatGPT

Create a highly detailed, visually rich 4:5 product image featuring the Lavaya Olive Oil bottle (as per uploaded image). Place the bottle at an elegant angle in the center, slightly tilted, surrounded by fresh, vibrant green olives and olive branches with realistic leaves. Add dynamic golden olive oil splashes flowing around and behind the bottle, giving it an energetic and luxurious feel. Use a warm, greenish-gold background gradient that radiates softly from the center, enhancing the natural and organic essence. Add light sparkles and soft focus olive trees or leaves in the background to add depth. The lighting should be glossy and premium, making the bottle and oil appear rich and nourishing. Make sure the overall aesthetic is bold, clean, and focused on purity and freshness, similar to a Garnier-style cosmetic ad. No text or branding changes - keep the original label visible and untouched.

#This photo can be created in either of these two ways, with or without the sample photo..

Create a highly detailed, visually rich 4:5 product image featuring the Lavaya Olive Oil bottle (as per uploaded image). Place the bottle at an elegant angle in the center, slightly tilted, surrounded by fresh, vibrant green olives and olive branches with realistic leaves. Add dynamic golden olive oil splashes flowing around and behind the bottle, giving it an energetic and luxurious feel. Use a warm, greenish-gold background gradient that radiates softly from the center, enhancing the natural and organic essence. Add light sparkles and soft focus olive trees or leaves in the background to add depth. The lighting should be glossy and premium, making the bottle and oil appear rich and nourishing. Make sure the overall aesthetic is bold, clean, and focused on purity and freshness, similar to a Garnier-style cosmetic ad. No text or branding changes - keep the original label visible and untouched.

#Things to pay attention to :-

Creating food photos with AI is now happening on a large scale. Here are the details that need to be created in this photo, and the absolute must-haves, so that it is more realistic. You can learn from these prompts.

green olives and olive branches with realistic leaves. Add dynamic golden olive oil splashes flowing around and behind the bottle, giving it an energetic and luxurious feel. Use a warm, greenish-gold background gradient that radiates softly from the center, enhancing the natural and organic essence. Add light sparkles and soft focus olive trees or leaves in the background to add depth. The lighting should be glossy and premium, making the bottle and oil appear rich and nourishing. Make sure the overall aesthetic is bold, clean, and focused on purity and freshness, similar to a Garnier-style cosmetic ad. No text or branding changes - keep the original label visible and untouched.



ChatGPT



ChatGPT

CA hyper-realistic close-up of a golden glass bottle of Ligne St Barth Hibiscus Oil standing on a sunlit beach during golden hour. The bottle has a glossy gold cap and is covered in water droplets, reflecting light beautifully. Surrounding the product are vibrant red hibiscus petals caught mid-air, and dynamic splashes of hibiscus oil droplets, adding energy to the scene. The background features a soft-focus beach with a warm sunset sky, casting golden-orange hues across the composition. The product label is clearly visible in English. The scene feels luxurious, tropical, and sensorial - ideal for beauty or skincare branding.

#This photo can be created in either of these two ways, with or without the sample photo..

A hyper-realistic close-up of a golden glass bottle of Ligne St Barth Hibiscus Oil standing on a sunlit beach during golden hour. The bottle has a glossy gold cap and is covered in water droplets, reflecting light beautifully. Surrounding the product are vibrant red hibiscus petals caught mid-air, and dynamic splashes of hibiscus oil droplets, adding energy to the scene. The background features a soft-focus beach with a warm sunset sky, casting golden-orange hues across the composition. The product label is clearly visible in English. The scene feels luxurious, tropical, and sensorial - ideal for beauty or skincare branding.

#Things to pay attention to :-

Creating food photos with AI is now happening on a large scale. Here are the details that need to be created in this photo, and the absolute must-haves, so that it is more realistic. You can learn from these prompts.



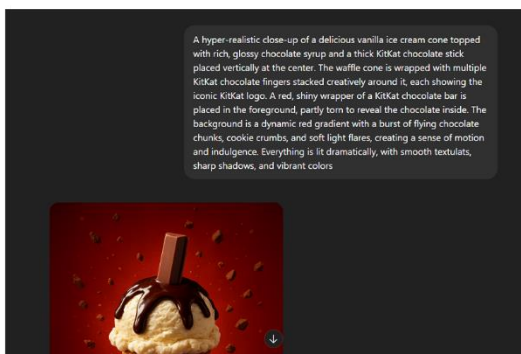
ChatGPT



ChatGPT

A hyper-realistic close-up of a delicious vanilla ice cream cone topped with rich, glossy chocolate syrup and a thick KitKat chocolate stick placed vertically at the center. The waffle cone is wrapped with multiple KitKat chocolate fingers stacked creatively around it, each showing the iconic KitKat logo. A red, shiny wrapper of a KitKat chocolate bar is placed in the foreground, partly torn to reveal the chocolate inside. The background is a dynamic red gradient with a burst of flying chocolate chunks, cookie crumbs, and soft light flares, creating a sense of motion and indulgence. Everything is lit dramatically, with smooth textures, sharp shadows, and vibrant colors

#This photo can be created in either of these two ways, with or without the sample photo..



#Things to pay attention to :-

You can learn from this Prompt how to turn an idea in our minds into a creation without any photos. By studying this, you can show the creative spirit in your heart.



ChatGPT



ChatGPT

ACreate a high-resolution 4:5 vertical food product photo styled in a moody, editorial setup. Place a [Image Uploaded] on a minimalist, round stone pedestal stand. Use a matte, complementary background and neutral grey table linen to create a clean, modern aesthetic. Surround the scene with a few ceramic cups and minimalistic tableware in muted tones, maintaining a calm and organic vibe. The lighting should be soft and diffused from the left, with subtle shadows that highlight texture and depth. Ensure the focus is sharp on the product, with a shallow depth of field that blurs the background slightly. The overall tone should be elegant, natural, and editorial ideal for premium product presentation on social media or print.



A Create a high-resolution 4:5 vertical food product photo styled in a moody, editorial setup. Place a [Image Uploaded] on a minimalist, round stone pedestal stand. Use a matte, complementary background and neutral grey table linen to create a clean, modern aesthetic. Surround the scene with a few ceramic cups and minimalistic tableware in muted tones, maintaining a calm and organic vibe. The lighting should be soft and diffused from the left, with subtle shadows that highlight texture and depth. Ensure the focus is sharp on the product, with a shallow depth of field that blurs the background slightly. The overall tone should be elegant, natural, and editorial ideal for premium product presentation on social media or print.

#Things to pay attention to :-

You can learn from this Promnt how to turn an idea in our minds into a creation without any photos. By studying this, you can show the creative spirit in your heart.



ChatGPT



ChatGPT

Create image Create a high-resolution vertical studio photo (4:5 aspect ratio) of a cheerful young girl (around 4-6 years old) standing in a minimalist, pastel-colored studio setting with soft lighting. She is wearing a stylish I [dress attached as an image] and a wide straw hat, holding it playfully with both hands. Her pose is relaxed and joyful, smiling toward the camera. The background includes a couple of tropical green plants and soft yellow/beige blocks for a summery, fresh vibe. She wears white ballerina shoes with transparent bow details. Focus on the full outfit, with realistic textures and fabric flow. The scene should be fashion catalog quality with clean, aesthetic composition.



Create image Create a high-resolution vertical studio photo (4:5 aspect ratio) of a cheerful young girl (around 4-6 years old) standing in a minimalist, pastel-colored studio setting with soft lighting. She is wearing a stylish I [dress attached as an image] and a wide straw hat, holding it playfully with both hands. Her pose is relaxed and joyful, smiling toward the camera. The background includes a couple of tropical green plants and soft yellow/beige blocks for a summery, fresh vibe. She wears white ballerina shoes with transparent bow details. Focus on the full outfit, with realistic textures and fabric flow. The scene should be fashion catalog quality with clean, aesthetic composition.

#Things to pay attention to :-

This is a must-learn for anyone starting a new clothing business. The reason is that a real person can create realistic photos of you wearing your clothes for free. This will save you a lot of money. You can also learn how to create a real person and create realistic photos from these prompts.

ratio) of a cheerful young girl (around 4-6 years old) standing in a minimalist, pastel-colored studio setting with soft lighting. She is wearing a stylish I [dress attached as an image] and a wide straw hat, holding it playfully with both hands. Her pose is relaxed and joyful, smiling toward the camera. The background includes a couple of tropical green plants and soft yellow/beige blocks for a summery, fresh vibe. She wears white ballerina shoes with transparent bow details. Focus on the full outfit, with realistic textures and fabric flow. The scene should be fashion catalog quality with clean, aesthetic composition.

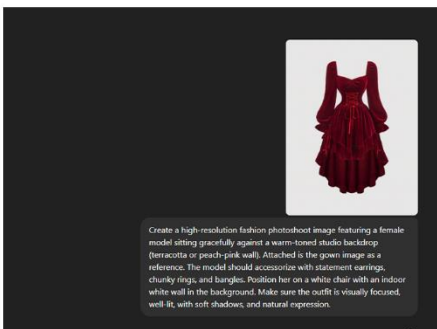


ChatGPT



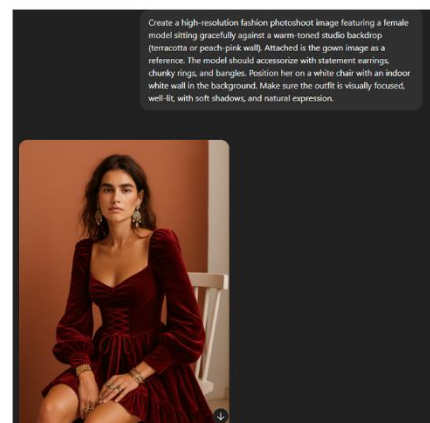
ChatGPT

Create a high-resolution fashion photoshoot image featuring a female model sitting gracefully against a warm-toned studio backdrop (terracotta or peach-pink wall). Attached is the gown image as a reference. The model should accessorize with statement earrings, chunky rings, and bangles. Position her on a white chair with an indoor white wall in the background. Make sure the outfit is visually focused, well-lit, with soft shadows, and natural expression.



#Things to pay attention to :-

This is a must-learn for anyone starting a new clothing business. The reason is that a real person can create realistic photos of you wearing your clothes for free. This will save you a lot of money. You can also learn how to create a real person and create realistic photos from these prompts.



ChatGPT

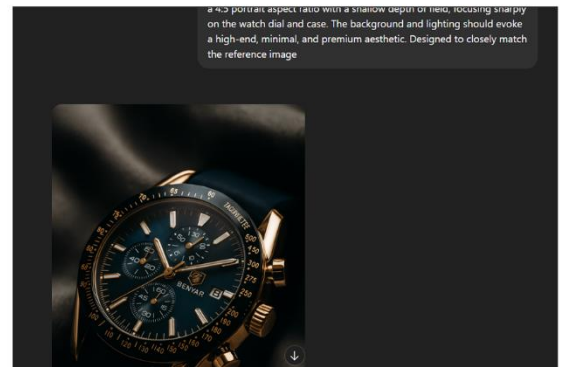


ChatGPT

Close-up product photo of the uploaded wristwatch, styled in a luxury and elegant setting. The watch is positioned diagonally on softly wrinkled, matte grey fabric with visible texture. Use a cinematic, soft lighting setup that casts warm highlights and subtle shadows to emphasize the black glossy meta. case and reflective surfaces. Maintain a 4:5 portrait aspect ratio with a shallow depth of field, focusing sharply on the watch dial and case. The background and lighting should evoke a high-end, minimal, and premium aesthetic. Designed to closely match the reference image



Close-up product photo of the uploaded wristwatch, styled in a luxury and elegant setting. The watch is positioned diagonally on softly wrinkled, matte grey fabric with visible texture. Use a cinematic, soft lighting setup that casts warm highlights and subtle shadows to emphasize the black glossy meta. case and reflective surfaces. Maintain a 4:5 portrait aspect ratio with a shallow depth of field, focusing sharply on the watch dial and case. The background and lighting should evoke a high-end, minimal, and premium aesthetic. Designed to closely match the reference image



a 4:5 portrait aspect ratio with a shallow depth of field, focusing sharply on the watch dial and case. The background and lighting should evoke a high-end, minimal, and premium aesthetic. Designed to closely match the reference image

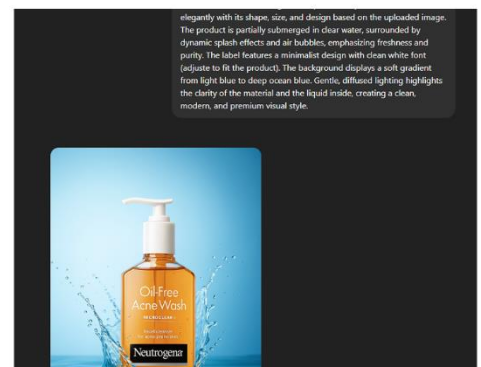


ChatGPT

A realistic commercial image of the product I uploaded, shown elegantly with its shape, size, and design based on the uploaded image. The product is partially submerged in clear water, surrounded by dynamic splash effects and air bubbles, emphasizing freshness and purity. The label features a minimalist design with clean white font (adjust to fit the product). The background displays a soft gradient from light blue to deep ocean blue. Gentle, diffused lighting highlights the clarity of the material and the liquid inside, creating a clean, modern, and premium visual style.



A realistic commercial image of the product I uploaded, shown elegantly with its shape, size, and design based on the uploaded image. The product is partially submerged in clear water, surrounded by dynamic splash effects and air bubbles, emphasizing freshness and purity. The label features a minimalist design with clean white font (adjust to fit the product). The background displays a soft gradient from light blue to deep ocean blue. Gentle, diffused lighting highlights the clarity of the material and the liquid inside, creating a clean, modern, and premium visual style.



elegantly with its shape, size, and design based on the uploaded image. The product is partially submerged in clear water, surrounded by dynamic splash effects and air bubbles, emphasizing freshness and purity. The label features a minimalist design with clean white font (adjust to fit the product). The background displays a soft gradient from light blue to deep ocean blue. Gentle, diffused lighting highlights the clarity of the material and the liquid inside, creating a clean, modern, and premium visual style.



ChatGPT

graceful woman with a neat, low bun and glowing skin is sitting at a vintage vanity table in a softly lit room. She is wearing an off-shoulder white shirt, eyes closed, enjoying the fragrance as she holds a perfume bottle gracefully near her neck. Replace the perfume bottle with ensuring it fits naturally in her hand with realistic lighting and reflections. Background includes delicate fairy lights, lit candles, soft furnishings, and a warm ambiance. Maintain a dreamy, feminine, luxurious mood with bokeh lighting and pastel tones. High resolution, 4K, vertical 4:5 format.



graceful woman with a neat, low bun and glowing skin is sitting at a vintage vanity table in a softly lit room. She is wearing an off-shoulder white shirt, eyes closed, enjoying the fragrance as she holds a perfume bottle gracefully near her neck. Replace the perfume bottle with ensuring it fits naturally in her hand with realistic lighting and reflections. Background includes delicate fairy lights, lit candles, soft furnishings, and a warm ambiance. Maintain a dreamy, feminine, luxurious mood with bokeh lighting and pastel tones. High resolution, 4K, vertical 4:5 format.

#Things to pay attention to :-

In this promo, we can show you how to create a photo shoot with a model for any product you want.



graceful woman with a neat, low bun and glowing skin is sitting at a vintage vanity table in a softly lit room. She is wearing an off-shoulder white shirt, eyes closed, enjoying the fragrance as she holds a perfume bottle gracefully near her neck. Replace the perfume bottle with ensuring it fits naturally in her hand with realistic lighting and reflections. Background includes delicate fairy lights, lit candles, soft furnishings, and a warm ambiance. Maintain a dreamy, feminine, luxurious mood with bokeh lighting and pastel tones. High resolution, 4K, vertical 4:5 format.



ChatGPT

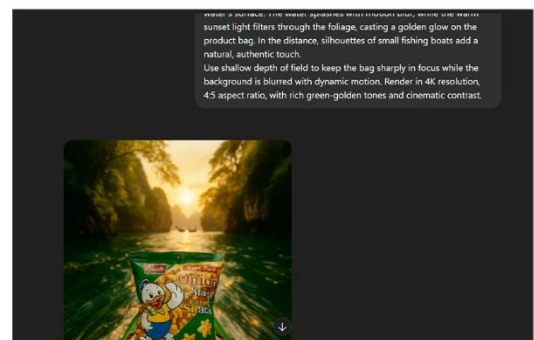
A hyper-realistic cinematic POV shot from the cockpit of a green kayak speeding down a crystal-clear emerald river during golden hour. In the foreground, two hands hold a bag of "facing forward, with perfect focus on its bright green packaging. On both sides of the river, cliffs and lush tropical trees with fresh green leaves frame the scene, with strands of seaweed swaying gently on the water's surface. The water splashes with motion blur, while the warm sunset light filters through the foliage, casting a golden glow on the product bag. In the distance, silhouettes of small fishing boats add a natural, authentic touch. Use shallow depth of field to keep the bag sharply in focus while the background is blurred with dynamic motion. Render in 4K resolution, 4:5 aspect ratio, with rich green-golden tones and cinematic contrast.



A hyper-realistic cinematic POV shot from the cockpit of a green kayak speeding down a crystal-clear emerald river during golden hour. In the foreground, two hands hold a bag of "facing forward, with perfect focus on its bright green packaging. On both sides of the river, cliffs and lush tropical trees with fresh green leaves frame the scene, with strands of seaweed swaying gently on the water's surface. The water splashes with motion blur, while the warm sunset light filters through the foliage, casting a golden glow on the product bag. In the distance, silhouettes of small fishing boats add a natural, authentic touch. Use shallow depth of field to keep the bag sharply in focus while the background is blurred with dynamic motion. Render in 4K resolution, 4:5 aspect ratio, with rich green-golden tones and cinematic contrast.

#Things to pay attention to :-

You can learn from this prompt how to place an item in an empty space in a cinematic background that suits it and how to give that item a cinematic look.





ChatGPT

Ultra-realistic beauty product shot. On a solid light blue background lies a neatly and aesthetically spread thin layer of white cream, creating a soft, smooth texture.

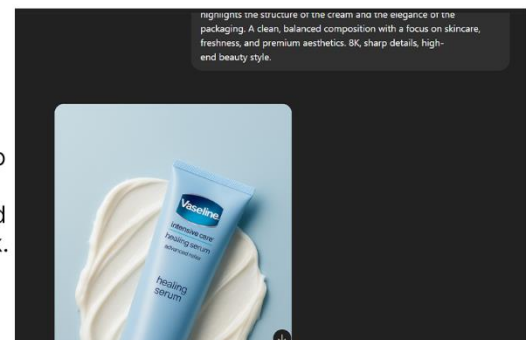
Resting gracefully on top of the cream is a stylish light blue facial moisturizer tube with a minimalist, modern design. Soft lighting highlights the structure of the cream and the elegance of the packaging. A clean, balanced composition with a focus on skincare, freshness, and premium aesthetics. 8K, sharp details, high-end beauty style.



Ultra-realistic beauty product shot. On a solid light blue background lies a neatly and aesthetically spread thin layer of white cream, creating a soft, smooth texture. Resting gracefully on top of the cream is a stylish light blue facial moisturizer tube with a minimalist, modern design. Soft lighting highlights the structure of the cream and the elegance of the packaging. A clean, balanced composition with a focus on skincare, freshness, and premium aesthetics. 8K, sharp details, high-end beauty style.

#Things to pay attention to :-

You can learn from this prompt how to place an item in an empty space in a cinematic background that suits it and how to give that item a cinematic look.



highlights the structure of the cream and the elegance of the packaging. A clean, balanced composition with a focus on skincare, freshness, and premium aesthetics. 8K, sharp details, high-end beauty style.



ChatGPT

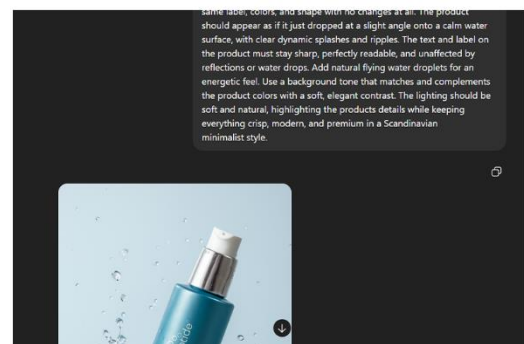
Create a premium, realistic product photo using my exact product - same label, colors, and shape with no changes at all. The product should appear as if it just dropped at a slight angle onto a calm water surface, with clear dynamic splashes and ripples. The text and label on the product must stay sharp, perfectly readable, and unaffected by reflections or water drops. Add natural flying water droplets for an energetic feel. Use a background tone that matches and complements the product colors with a soft, elegant contrast. The lighting should be soft and natural, highlighting the products details while keeping everything crisp, modern, and premium in a Scandinavian minimalist style.



Create a premium, realistic product photo using my exact product - same label, colors, and shape with no changes at all. The product should appear as if it just dropped at a slight angle onto a calm water surface, with clear dynamic splashes and ripples. The text and label on the product must stay sharp, perfectly readable, and unaffected by reflections or water drops. Add natural flying water droplets for an energetic feel. Use a background tone that matches and complements the product color. The lighting should be soft and natural, highlighting the products details while keeping

#Things to pay attention to :-

You can learn from this prompt how to place an item in an empty space in a cinematic background that suits it and how to give that item a cinematic look.





ChatGPT

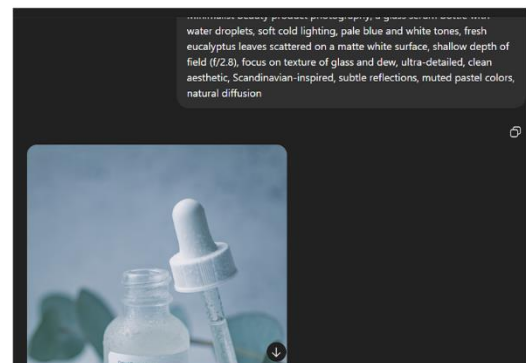
Minimalist beauty product photography, a glass serum bottle with water droplets, soft cold lighting, pale blue and white tones, fresh eucalyptus leaves scattered on a matte white surface, shallow depth of field (f/2.8), focus on texture of glass and dew, ultra-detailed, clean aesthetic, Scandinavian-inspired, subtle reflections, muted pastel colors, natural diffusion.



Minimalist beauty product photography, a glass serum bottle with water droplets, soft cold lighting, pale blue and white tones, fresh eucalyptus leaves scattered on a matte white surface, shallow depth of field (f/2.8), focus on texture of glass and dew, ultra-detailed, clean aesthetic, Scandinavian-inspired, subtle reflections, muted pastel colors, natural diffusion

#Things to pay attention to :-

You can learn from this prompt how to place an item in an empty space in a cinematic background that suits it and how to give that item a cinematic look.





ChatGPT

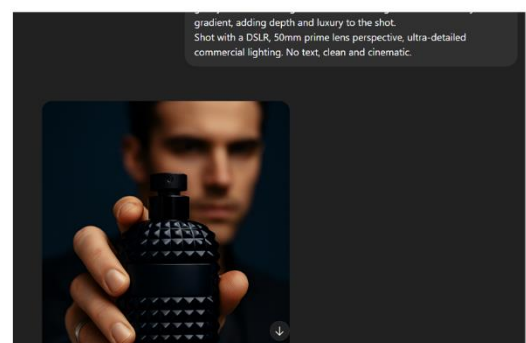
Generate a hyper-realistic close-up shot of a fair-skinned male model holding a perfume bottle based on the uploaded image directly toward the camera with one hand. The camera is focused tightly on the bottle, with the model's face softly blurred in the background (shallow depth of field). He wears a dark navy or black suit with a clean, modern look. His hand is detailed and masculine, with a subtle silver ring on one finger. The deep blue bottle reflects soft studio light, highlighting its glossy texture and elegant curves. The background is a rich navy gradient, adding depth and luxury to the shot. Shot with a DSLR, 50mm prime lens perspective, ultra-detailed commercial lighting. No text, clean and cinematic.

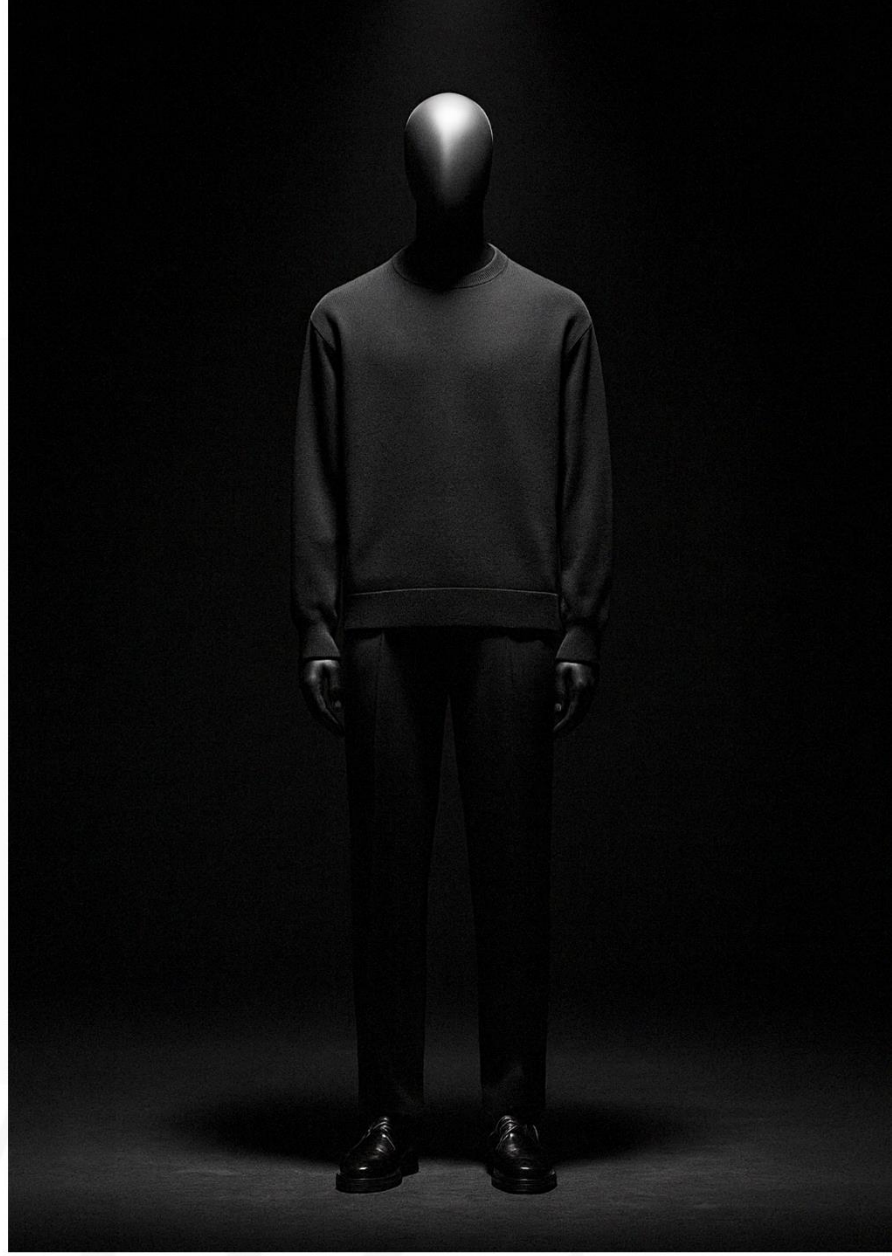


Generate a hyper-realistic close-up shot of a fair-skinned male model holding a perfume bottle based on the uploaded image directly toward the camera with one hand. The camera is focused tightly on the bottle, with the model's face softly blurred in the background (shallow depth of field). He wears a dark navy or black suit with a clean, modern look. His hand is detailed and masculine, with a subtle silver ring on one

#Things to pay attention to :-

You can learn from this prompt how to place an item in an empty space in a cinematic background that suits it and how to give that item a cinematic look.





ChatGPT

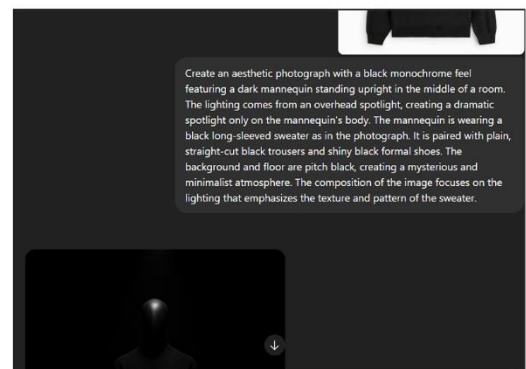
Create an aesthetic photograph with a black monochrome feel featuring a dark mannequin standing upright in the middle of a room. The lighting comes from an overhead spotlight, creating a dramatic spotlight only on the mannequin's body. The mannequin is wearing a black long-sleeved sweater as in the photograph. It is paired with plain, straight-cut black trousers and shiny black formal shoes. The background and floor are pitch black, creating a mysterious and minimalist atmosphere. The composition of the image focuses on the lighting that emphasizes the texture and pattern of the sweater.



Create an aesthetic photograph with a black monochrome feel featuring a dark mannequin standing upright in the middle of a room. The lighting comes from an overhead spotlight, creating a dramatic spotlight only on the mannequin's body. The mannequin is wearing a black long-sleeved sweater as in the photograph. It is paired with plain, straight-cut black trousers and shiny black formal shoes. The background and floor are pitch black, creating a mysterious and minimalist atmosphere. The composition of the image focuses on the lighting that emphasizes the texture and pattern of the sweater.

#Things to pay attention to :-

You can learn from this prompt how to place an item in an empty space in a cinematic background that suits it and how to give that item a cinematic look.





ChatGPT

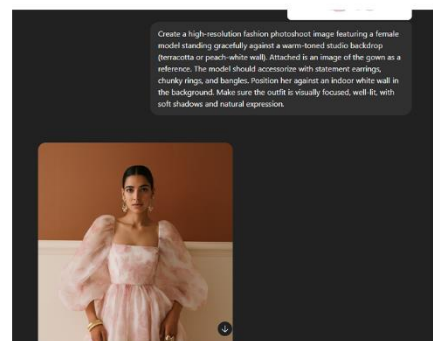
Create a high-resolution fashion photoshoot image featuring a female model standing gracefully against a warm-toned studio backdrop (terracotta or peach-white wall). Attached is an image of the gown as a reference. The model should accessorize with statement earrings, chunky rings, and bangles. Position her against an indoor white wall in the background. Make sure the outfit is visually focused, well-lit, with soft shadows and natural expression.



Create a high-resolution fashion photoshoot image featuring a female model standing gracefully against a warm-toned studio backdrop (terracotta or peach-white wall). Attached is an image of the gown as a reference. The model should accessorize with statement earrings, chunky rings, and bangles. Position her against an indoor white wall in the background. Make sure the outfit is visually focused, well-lit, with soft shadows and natural expression.

#Things to pay attention to :-

This is a must-learn for anyone starting a new clothing business. The reason is that a real person can create realistic photos of you wearing your clothes for free. This will save you a lot of money. You can also learn how to create a real person and create realistic photos from these prompts.



ChatGPT



ChatGPT

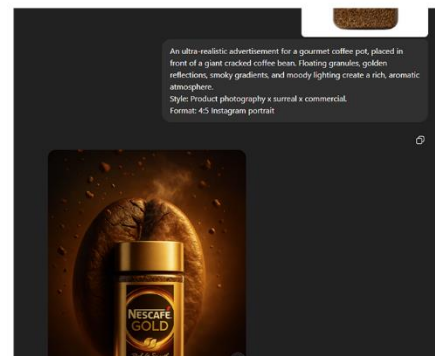
An ultra-realistic advertisement for a gourmet coffee pot, placed in front of a giant cracked coffee bean. Floating granules, golden reflections, smoky gradients, and moody lighting create a rich, aromatic atmosphere. Style: Product photography x surreal x commercial. Format: 4:5 Instagram portrait



An ultra-realistic advertisement for a gourmet coffee pot, placed in front of a giant cracked coffee bean. Floating granules, golden reflections, smoky gradients, and moody lighting create a rich, aromatic atmosphere.
Style: Product photography x surreal x commercial.
Format: 4:5 Instagram portrait

#Things to pay attention to :-

You can learn from this prompt how to place an item in an empty space in a cinematic background that suits it and how to give that item a cinematic look.



ChatGPT



ChatGPT

shampoo bottle sits on a forest floor with mist, dewdrops, and natural ingredients like aloe and herbs floating in a crystal droplet behind it. Clean, botanical, and fresh. Style: organic product photography * nature-inspired Format: 4:5 Instagram portrait

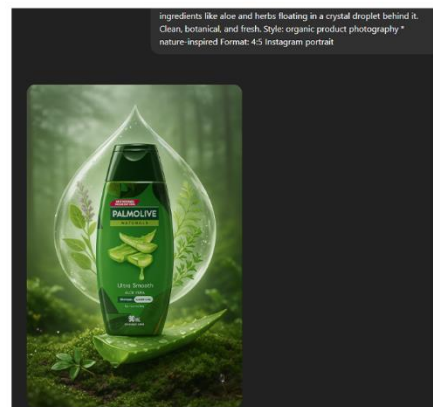
#This photo can be created in either of these two ways, with or without the sample photo..



shampoo bottle sits on a forest floor with mist, dewdrops, and natural ingredients like aloe and herbs floating in a crystal droplet behind it. Clean, botanical, and fresh. Style: organic product photography * nature-inspired Format: 4:5 Instagram portrait

#Things to pay attention to :-

You can learn from this prompt how to place an item in an empty space in a cinematic background that suits it and how to give that item a cinematic look.



ChatGPT



Nano
Banana



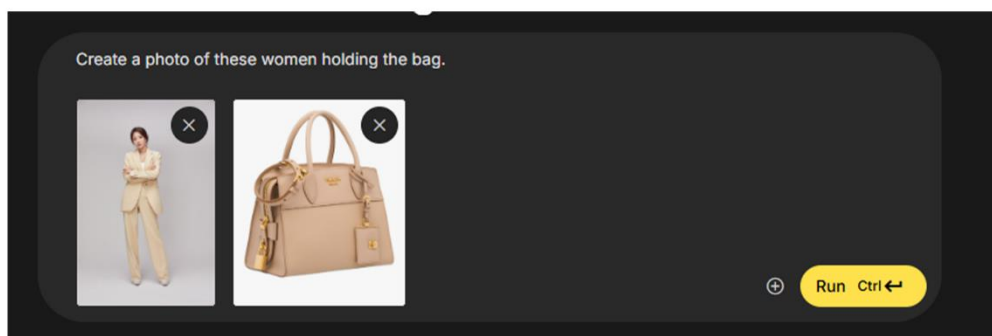
Nano
Banana

NANO BANANA යනු ගූගල් ස්ටුඩියෝ විසින් සංවර්ධනය කරන ලද AI මෙවලමකි

එමඟින් අපි කලින් Photoshop සමඟ කළ වැඩ ඉක්මනින් සහ පහසුවෙන් කිරීමට ඉඩ සලසන අතර අවම දැනුමකින් අපට නිර්මාණාත්මක ඡායාරූප නිර්මාණය කළ හැකිය.

අනෙකුත් Ai Tools වගේ මේකට විශාල වශයෙන් Promte දෙන්න අවශ්‍ය වෙන්න අපිට ඡායාරූපය නිර්මාණය කර ගැනීමට අවශ්‍ය ආකාරය පැහැදිලිව කෙටියෙන් ලබාදී අපිට අවශ්‍ය කරන ඡායාරූපය නිර්මාණය කර ගැනීමේ හැකියාව ඇත

Example -



Nano
Banana

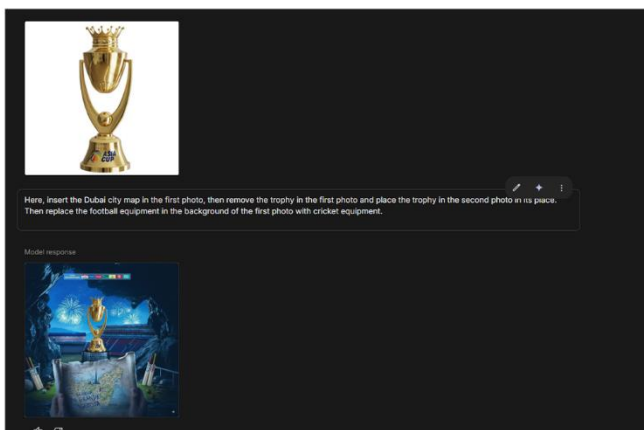
Create a photo of these women holding the bag



Nano
Banana

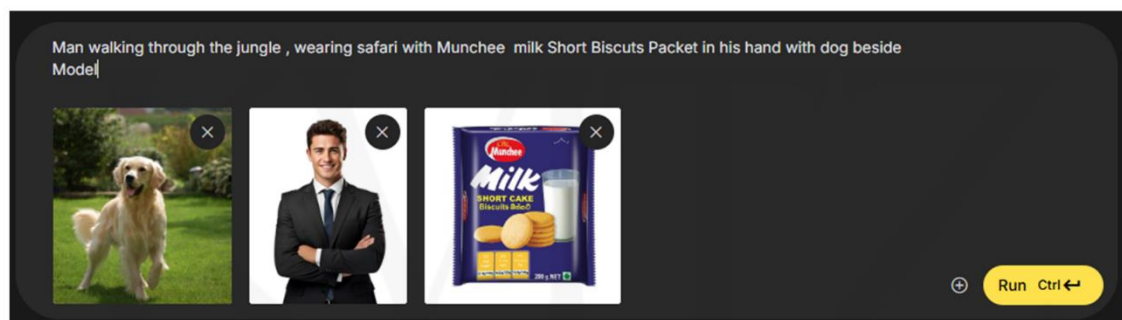
Here, insert the Dubai city map in the first photo, then remove the trophy in the first photo and place the trophy in the second photo in its place. Then replace the football equipment in the background of the first photo with cricket equipment. Shot in 8K resolution, ultra-sharp, high contrast, photorealistic, with professional studio aesthetics.

#This is a design that uses only prompts without any actual photos.



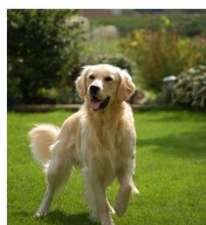
#Things to pay attention to :-

We can use it to change any element of the photo as we want. We can do the work that would take a long time in Photoshop very quickly with this tool.



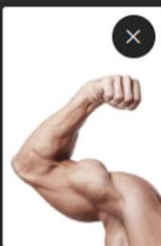
Man walking through the jungle , wearing safari with Munchee Milk Short Biscuits Packet in his hand with dog beside

#Creating a single photo by combining multiple photos





In the background I have given, this hand should be made of tree leaves. The hand made of those leaves should hold the drink can I have given and hold it. The image created should look like a very energetic drink.



Run Ctrl ←

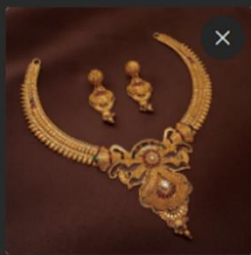
◆ Gemini Nano Banana

In the background I have given, this hand should be made of tree leaves. The hand made of those leaves should hold the drink can I have given and hold it. The image created should look like a very energetic drink

#Creating a single photo by combining multiple photos



The jewelry in the first photo I added is in the other photo, which is in a red box, and is designed as a commercial.



Run Ctrl ↵



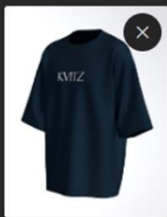
Nano
Banana

In the background I have given, this hand should be made of tree leaves. The hand made of those leaves should hold the drink can I have given and hold it. The image created should look like a very energetic drink

#Creating a single photo by combining multiple photos



Create a cinematic that removes the background of the T-shirt I inserted above the stage made of stones in the first scene.



⊕ Run Ctrl↵



Create a cinematic that removes the background of the T-shirt I inserted above the stage made of stones in the first scene.

#Creating a single photo by combining multiple photos



Please fix all the damaged areas of this old photo and create a very clear and colorful photo for me.



Run Ctrl ←



Nano
Banana

Please fix all the damaged areas of this old photo and create a very clear and colorful photo for me..

#Creating a single photo by combining multiple photos



Nano
Banana

The reason I don't include too many samples in this tool is because

Compared to other tools, this tool Ai doesn't require a long prompt. You can simply give it what you need and get the desired result.

KVITZ

Thank you very much for trusting us and contacting us...!

Kvitz is a graphic design company in Sri Lanka. Our sole purpose is not just to do graphic design. We use new technologies to increase productivity and do new things. We also have a large number of other businesses

The schedule for the two webinars we are offering you is as follows:

Saturday, September 20th	Saturday, September 27th
<p>අපි කතා කරන්නේ AI ඡායාරූප සංස්කරණයේ මූලික කරුණු ගැන.</p> <p>Even someone who knows nothing can learn about this by contacting us.</p>	<p>අපි AI භාවිතයෙන් ඡායාරූප නිර්මාණය කරන්නේ කෙසේද යන්න ගැන කතා කරමු.</p> <p>How to write AI Prompt correctly?</p> <p>How to control camera settings with Ai Prompt</p>
Time: 9:00 PM to 11:00 PM	

The main purpose of these two online webinars is to discuss the questions you have about AI.